

III. EXPLOATAREA CINEMATOGRAFICĂ **EXHIBITION**

1. **DATE GENERALE 2013 - 2017**
GENERAL OVERVIEW BETWEEN 2013 - 2017
2. **STATISTICĂ GENERALĂ PRIVIND REȚEAUA CINEMATOGRAFICĂ**
GENERAL STATISTICS REGARDING THE EXHIBITION
3. **REALIZARILE ANULUI 2017 DUPĂ ȚARA DE ORIGINE/**
ADMISSION ACCORDING TO THE ORIGIN RELEASE FEATURE FILMS 2017
 - 3.1. **NUMAR SPECTATORI REALIZAT CU FILMELE ÎN PREMIERA PE ȚARI**
2013 - 2017
ADMISSIONS ACCORDING TO THE ORIGIN OF FIRST-TIME RELEASE FILMS.
 - 3.2. **TOTAL SPECTATORI DUPĂ ȚARA DE ORIGINE 2013 - 2017**
ADMISSIONS ACCORDING TO THE ORIGIN OF RELEASED FEATURE FILMS
4. **NUMARUL SPECTATORILOR REALIZAT CU FILMELE ÎN PREMIERA, PE DISTRIBUITORI**
ADMISSIONS ACCORDING TO MAJOR DISTRIBUTION COMPANIES OF FIRST-TIME RELEASED FILMS
5. **NUMĂRUL SPECTATORILOR REALIZAT CU TOATE FILMELE DIFUZATE PE DISTRIBUITORI/ADMISSIONS ACCORDING TO MAJOR DISTRIBUTION COMPANIES**
2013 - 2017
6. **PRIMELE 20 DE CINEMATOGRAFE CU UN ECRAN DUPĂ NUMARUL SPECTATORILOR**
2017 / THE TOP 20 CINEMAS BY ADMISSIONS
7. **CINEMATOGRAFE MULTIECRAN SI MULTIPLEXURI ÎN FUNCȚIUNE 2017**
MULTISCREENS CINEMAS AND MULTIPLEXES
8. **PRINCIPALELE CINEMATOGRAFE DE ARTĂ 2017**
THE MAIN ART CINEMAS
9. **PRIMELE 20 DE FILME DUPĂ NUMARUL SPECTATORILOR - 2017**
THE TOP 20 FEATURE FILMS BY ADMISSIONS - 2017
10. **PRIMELE 20 FILME EUROPENE DUPĂ NUMARUL SPECTATORILOR - 2017**
THE TOP 20 EUROPEAN FEATURE FILMS BY ADMISSIONS - 2017
11. **TOP 20 FILME DE PREMIERA ROMÂNESTI DUPĂ NUMARUL DE SPECTATORI**
Anul 2017
THE TOP 20 OF FIRST-RELEASE NATIONAL FEATURE FILMS BY ADMISSIONS
12. **PRIMELE 20 FILME ROMÂNESTI DUPĂ NUMARUL SPECTATORILOR 2013-2017**
THE TOP 20 OF FIRST-RELEASE NATIONAL FEATURE FILMS BY ADMISSIONS

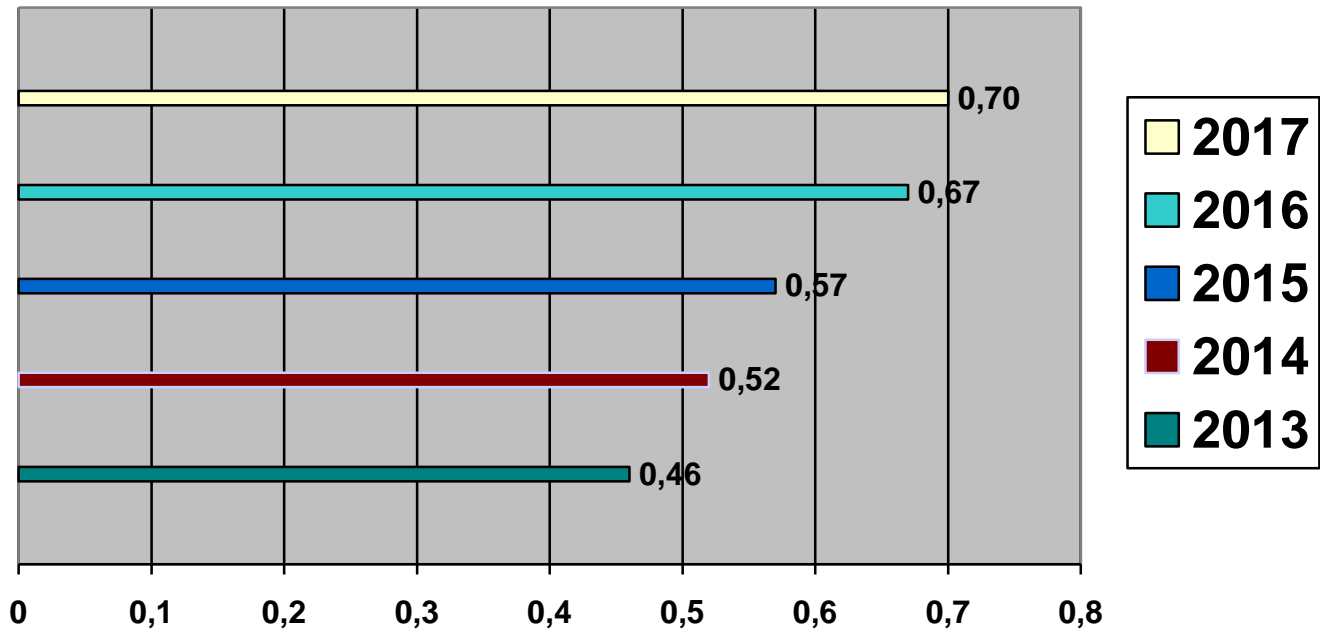
III. EXPLOATAREA DE FILME

1. DATE GENERALE

GENERAL OVERVIEW BETWEEN 2013- 2017

Nr. Crt.	Date generale/General data	2013	2014	2015	2016	2017
1.	Cinematografe în funcțiune/ Number of active cinemas	76	78	82	92	90
2.	Locuri /Seats	57 248	61 534	68 415	74 116	72 112
3.	Spectatori /Admissions	9 048 257	10 171.644	11 166 861	13 033 687	13 877 470
4.	Încasări totale (RON)/ Gross box office (RON)	160 523 144	185 201.343	206 868 801	241 582 416	266 584 619
5.	Frecvența pe locuitor/ Average admissions per inhabitant	0,46	0,52	0,57	0,67	0,70
6.	Preț mediu bilet - lei/ Average ticket price - national currency	17,74	18,21	18,52	18,54	19,21

SPECTATORI FILM - FRECVENȚA PE LOCUITOR /
AVERAGE ADMISSIONS PER INHABITANT
2013 _ 2017



PRINCIPALELE SOCIETĂȚI DE EXPLOATARE A CINEMATOGRAFELOR
 MAJOR EXHIBITION COMPANIES
 ANUL / YEAR 2017

Principalele societati de exploatare a cinematografelor/ Major exhibition companies	Cinematografe în funcțiune/ Number of active cinemas	Ecrane/ Screens	Spectatori/ Admissions	Incasari (RON)/ Gross box office (RON)
CINEMA CITY ROMANIA	25	231	8 491 954	171 887 154
BANEASA DEVELOPMENTS	1	13	956 257	21 613 121
MOVIEPLEX CINEMA	1	11	704 419	13 590 890
ESB CINEMA SERVICE	1	8	558 276	11 406 979
PRO SOLUTION SRL	3	11	368 430	6 375 120
HOLLYWOOD MULTIPLEX OPERATIONS	1	10	339 417	6 633 836
CINEMA PALACE ORADEA	1	6	296 035	4 854 030
CINE GRAND	2	12	239 816	4 707 383
TV SAT 2002	3	3	209 938	2 918 785
INSPIRE THROUGH	2	5	206 443	3 249 309
CITYPLEX	5	12	169 963	2 522 497
R.A.D.E.F. ROMANIAFILM	14	14	155 244	1 616 902
WINI IMOBILI	1	8	149 838	2 358 035
INTECH SOLUTIONS	1	7	148 829	2 191 683
ROCINEMA	2	4	132 579	1 989 678
MARCOM FANTASTIC	4	6	108 404	1 648 509
CENTRUL JUNEHAN PENTRU CULTURA BISTRITA	1	1	80 826	1 023 793
INSTITUTUL CULTURAL FRANCEZ	1	1	63 488	571 655
ASOCIATIA VICTORIA FILM	1	1	61 446	687 204
CENTRUL CULTURAL JUDEHAN CALARASI	1	1	43 625	473 792
METACOM SATU MARE	1	1	35 869	601 996
BEST SALE	1	2	35 596	567 325

PRIMARIA ONEȘTI	1	1	34 026	388 216
PRIMARIA LUGOJ	1	2	26 648	244 042
PRIMĂRIA VULCAN	1	1	20 829	342 116
TEATRUL MUNICIPAL ARIEL	1	1	20 328	228 868
A N F	2	2	17 684	140 806
NOUL CINEMATOGRAF AL REGIZORULUI ROMAN	1	1	17 675	167 663
PRIMĂRIA DOROHOI	1	1	17 632	236 626
VISION P.M	1	1	16 768	199 563
PRIMĂRIA ALEXANDRIA	1	1	16 244	203 425
CASA DE CULTURĂ ODOBEȘTI	1	1	12 343	61 715
PRIMĂRIA GHERLA	1	1	10 376	72 242
PRIMĂRIA SUCEAVA	1	1	8 171	71 003
D.M.C.SLOBOZIA	1	1	7 302	38 940
ATENEUL TĂTĂRAȘ	1	1	5 808	67 497
COMPANIA DE EXPLOATARE FILM	1	1	4 069	70 778
CARAVANĂ	1	1	84 875	561 443
TOTAL	90	386	13 877 470	266 584 619

**2. STATISTICĂ GENERALĂ PRIVIND REȚEAUA CINEMATOGRAFICĂ /
GENERAL STATISTICS REGARDING THE EXHIBITION
ANUL / YEAR 2017**

Număr cinematografe în funcțiune/ <i>Number of active cinemas</i>	90
Număr ecrane/ <i>Number of screens</i>	386
Număr locuri/ <i>Number of seats</i>	72 112
Număr mediu locuri per ecran/ <i>Average number of places per screen</i>	186
Număr cinematografe cu 2, 3 sau mai multe ecrane/ <i>Number of multiscreens and multiplexes</i>	47
Număr cinematografe de artă / Europa Cinemas <i>Number of art cinemas /Europa Cinemas</i>	9
Număr spectacole/ <i>Number of screenings</i>	602 625
Număr spectatori/ <i>Admissions</i>	13 877 470
Frecvența pe locuitor/ <i>Average admissions per inhabitant</i>	0,70
Spectatori / spectacol <i>Admissions / screening</i>	23
Încasări - RON/ <i>Gross box office - in RON</i>	266 584 617
Preț mediu bilet lei/ <i>Average ticket price (national curency)</i>	19,21

3. REALIZARILE ANULUI 2017 DUPĂ ȚARA DE ORIGINE/

ADMISSION ACCORDING TO THE ORIGIN RELEASE FEATURE FILMS 2017

TARA	TOTAL FILME			FILME IN PREMIERA		
	Nr. TITLURI	SPECTATORI	INCASARI	TITLURI	SPECTATORI	INCASARI
	No. TITLE	ADMISSION	BOX OFFICE	No. TITLE	ADMISSION	BOX OFFICE
TOTAL FILME	442	13.877.470	266.584.619	203	12.909.431	249.223.000
RO	66	303.758	4.273.985	28	280.910	4.096.659
US	191	11.650.321	227.771.356	99	10.953.609	214.771.175
EU	154	1.415.969	24.499.675	71	1.342.471	23.665.180
GB	12	350.902	6.430.632	6	343.138	6.282.425
FR	47	323.440	5.457.892	21	312.519	5.357.087
DE	17	178.632	3.345.080	10	173.731	3.300.764
IT	5	15.238	248.185	3	14.454	240.064
ES	13	79.124	1.209.496	4	57.446	913.684
ALTE TARI (EU)	60	468.633	7.808.390	27	441.183	7.571.156
ALTE TARI	31	507.422	10.039.603	5	332.441	6.689.986

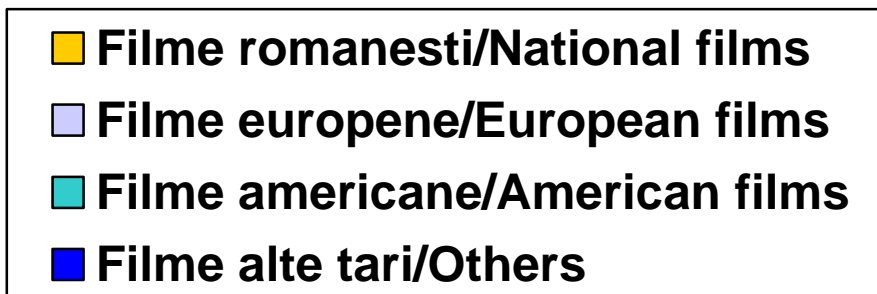
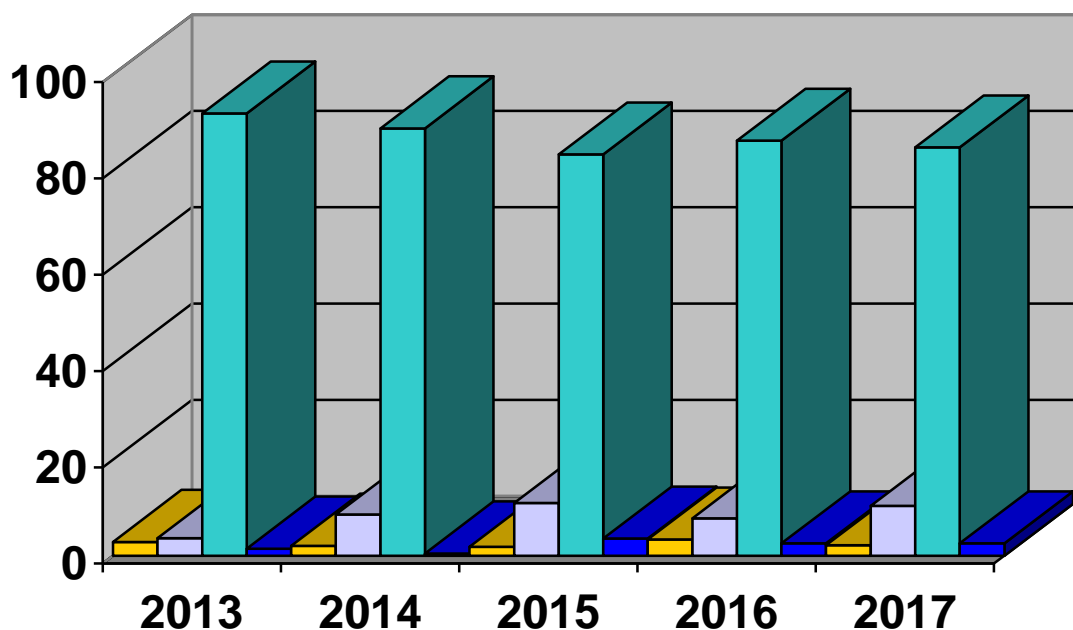
TOP 10 TARI DUPĂ NUMARUL DE SPECTATORI 2017

THE TOP 10 ADMISSION TO THE ORIGIN RELEASE FEATURE FILMS 2017

Nrc.	TARA	TOTAL		PREMIERA		% / SPCT	% / INC.
		NRT.	NSP.	SPECTATORI	INCASARI		
		No. TITLE	ADMISSION	BOX OFFICE	%ADM.		
1. US	TOTAL	191	472,824	11,650,321	227,771,356	83.95	85.44
	PREMIERE	99	446,548	10,953,609	214,771,175	84.85	86.18
2. GB	TOTAL	12	22,151	350,902	6,430,632	2.53	2.41
	PREMIERE	6	21,856	343,138	6,282,425	2.66	2.52
3. CA	TOTAL	8	14,468	336,693	6,740,994	2.43	2.53
	PREMIERE	3	14,033	327,696	6,628,260	2.54	2.66
4. FR	TOTAL	47	24,783	323,440	5,457,892	2.33	2.05
	PREMIERE	21	24,338	312,519	5,357,087	2.42	2.15
5. RO	TOTAL	66	16,289	303,758	4,273,985	2.19	1.60
	PREMIERE	28	15,792	280,910	4,096,659	2.18	1.64
6. DE	TOTAL	17	10,739	178,632	3,345,080	1.29	1.25
	PREMIERE	10	10,474	173,731	3,300,764	1.35	1.32
7. RU	TOTAL	5	8,951	159,469	2,789,206	1.15	1.05
	PREMIERE	3	8,913	157,863	2,772,532	1.22	1.11
8. CN	TOTAL	2	4,330	149,493	3,057,204	1.08	1.15
	PREMIERE	0	0	0	0	0.00	0.00
9. BE	TOTAL	6	4,714	86,642	1,582,802	0.62	0.59
	PREMIERE	2	4,657	86,143	1,579,882	0.67	0.63
10. ES	TOTAL	13	5,212	79,124	1,209,496	0.57	0.45
	PREMIERE	4	4,058	57,446	913,684	0.44	0.37
ALTE TARI:	TOTAL	75	18,164	258,996	3,925,972	1.87	1.47
	PREMIERE	27	17,085	216,376	3,520,532	1.56	1.32

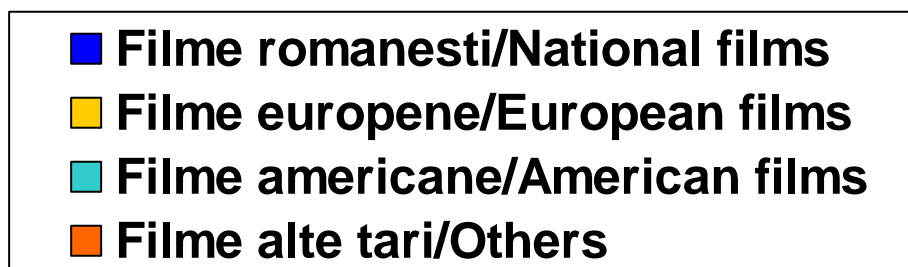
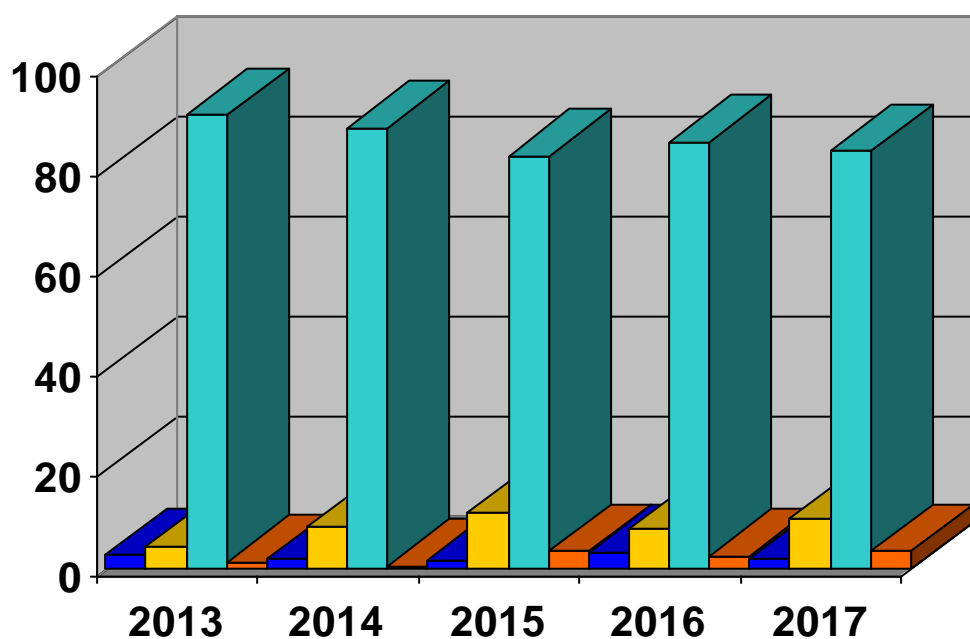
**3.1 NUMĂR DE SPECTATORI REALIZAT CU FILMELE ÎN PREMIERĂ PE ȚĂRI
ADMISSIONS ACCORDING TO THE ORIGIN OF FIRST TIME RELEASE FEATURE FILMS
2013 - 2017**

Țara de origine/ Film origin	2013 %	2014 %	2015 %	2016 %	2017 %
Românești/ National films	242 030 2,86	199 549 2,11	203 822 1,90	428 048 3,39	280 910 2,18
Europene/ European films	314 018 3,71	814 518 8,61	1 184 312 11,04	987 398 7,82	1 342 471 10,40
Americane/ American films	7 776 969 91,94	8 393 689 88,77	8 947 476 83,46	10 890 575 86,22	10 953 609 84,85
Alte țări/ Others	125 791 1,49	47 692 0,50	384 708 3,58	325 281 2,58	332 441 2,58
Total	8 458 808	9 455 448	10 720 318	12 631 302	12 909 431



**3.2 TOTAL SPECTATORI DUPĂ ȚARA DE ORIGINE /
ADMISSIONS ACCORDING TO THE ORIGIN OF ALL RELEASED FEATURE FILMS
2013 - 2017**

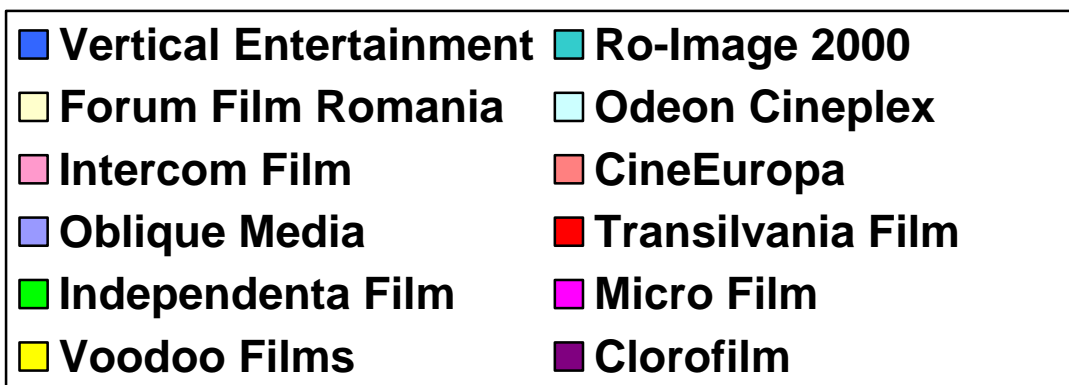
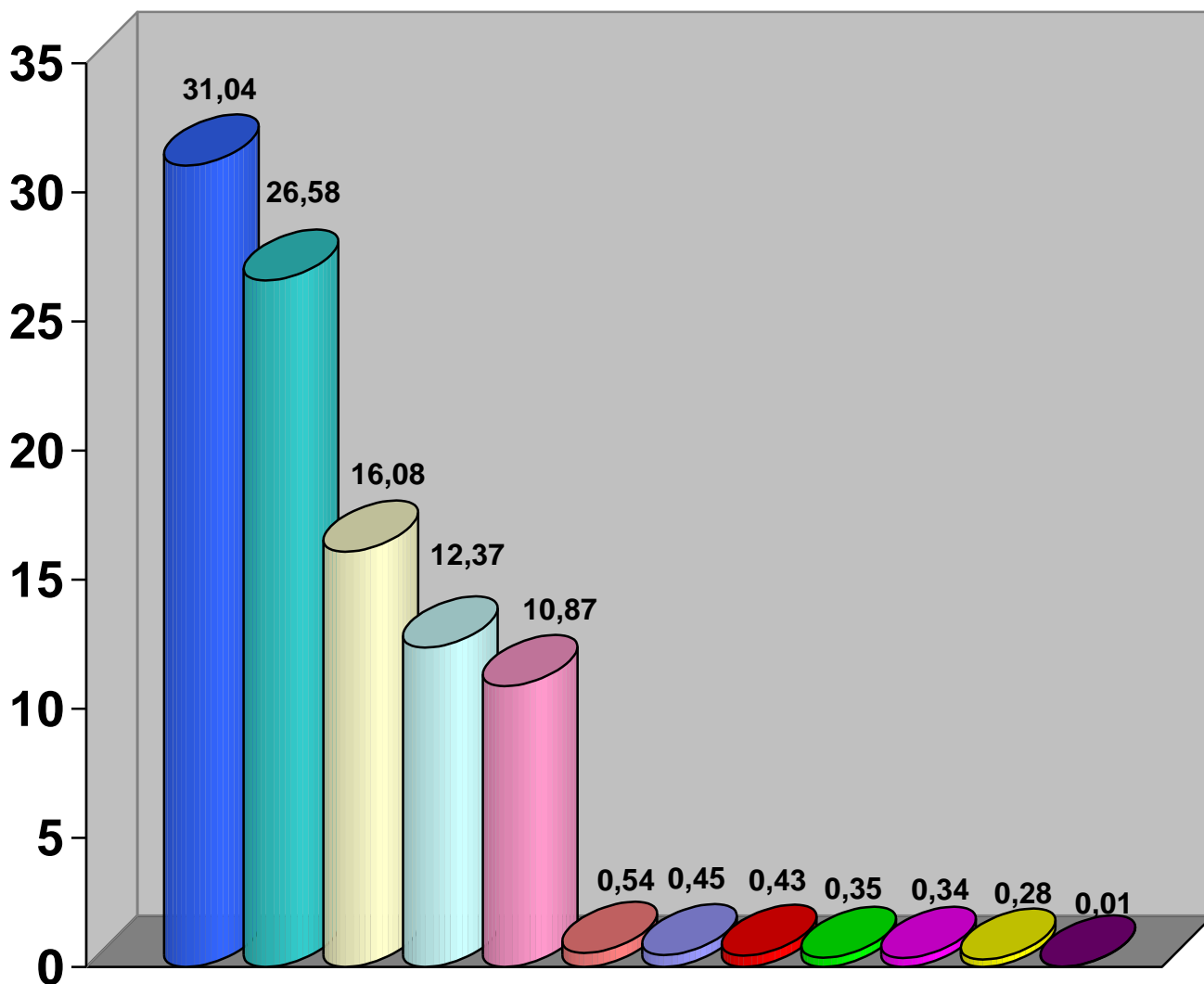
Țara de origine/ <i>Film origin</i>	2013 %	2014 %	2015 %	2016 %	2017 %
Românești/ <i>National films</i>	256 594 2,84	221 625 2,18	216 316 1,94	459 053 3,52	303 758 2,19
Europene/ <i>European films</i>	418 018 4,62	876 961 8,62	1 275 601 11,42	1 065 694 8,17	1 415 969 10,20
Americane/ <i>American films</i>	8 238 764 91,05	8 996 933 88,45	9 259 088 82,92	11 163 351 85,65	11 650 321 83,95
Alte țări/ <i>Others</i>	134 881 1,49	76 125 0,75	415 856 3,72	345 589 2,65	507 422 3,66
Total	9 048 257	10 171 644	11 166 861	13 033 687	13 877 470



**4. NUMĂRUL SPECTATORILOR REALIZAT CU FILMELE ÎN PREMIERĂ PE DISTRIBUITORI
ADMISSIONS ACCORDING TO MAJOR DISTRIBUTION COMPANIES OF FIRST-TIME
RELEASED FILMS 2013 - 2017**

<i>Distribuitori/ Distribution companies</i>	2013 %	2014 %	2015 %	2016 %	2017 %
Vertical Entertainment		792.309 8,38	2.262.850 21,11	3.657.835 28,96	4.007.229 31,04
Ro - Image 2000	1.671.038 19,76	1.699.574 17,97	3.599.093 33,57	3.289.131 26,04	3.431.917 26,58
Forum Film Romania	1.496.546 17,69	1.696.828 17,95	2.361.856 22,03	2.298.327 18,20	2.075.989 16,08
Odeon Cineplex	1.027.971 12,15	1.517.757 16,05	912.111 8,51	1.714.575 13,57	1.597.532 12,37
Intercom Film	1.056.453 12,49	1.107.349 11,71	1.275.473 11,90	1.181.773 9,36	1.402.981 10,87
Zazu Film		87.288 0,92	23.753 0,22	133.207 1,05	
Cine Europa			9.975 0,09	55.712 0,44	70.084 0,54
Oblique Media					57.813 0,45
Transilvania Film	15.640 0,18	28.243 0,30	86.340 0,81	53.539 0,42	55.192 0,43
Independența Film	46.475 0,55	80.543 0,85	39.055 0,36	51.489 0,41	45.284 0,35
Micro Film				16.256 0,13	43.493 0,34
Voodoo Films				54.444 0,43	36.432 0,28
Clorofilm	5.420 0,06	4.351 0,05	16.506 0,15	14.814 0,12	1.223 0,01
MediaPro Distribution	2.679.073 31,67	2.321.936 24,56			
Hollywood Multiplex	265.068 3,13	29.663 0,31			
Alți distribuitori/ Others	195.124 2,31	89.607 0,95	133.306 1,24	110.200 0,87	84.262 0,65
Total	8.458.808	9.455.448	10.720.318	12.631.302	12.909.431

COTA DE PIATA A PRINCIPALILOR DISTRIBUITORI CU FILME IN PREMIERĂ, ÎN
 FUNCȚIE DE SPECTATORI /
 MARKET SHARE ACCORDING TO DISTRIBUTION COMPANIES OF FIRST-TIME RELEASE
 FILMS
 ANUL/YEAR 2017



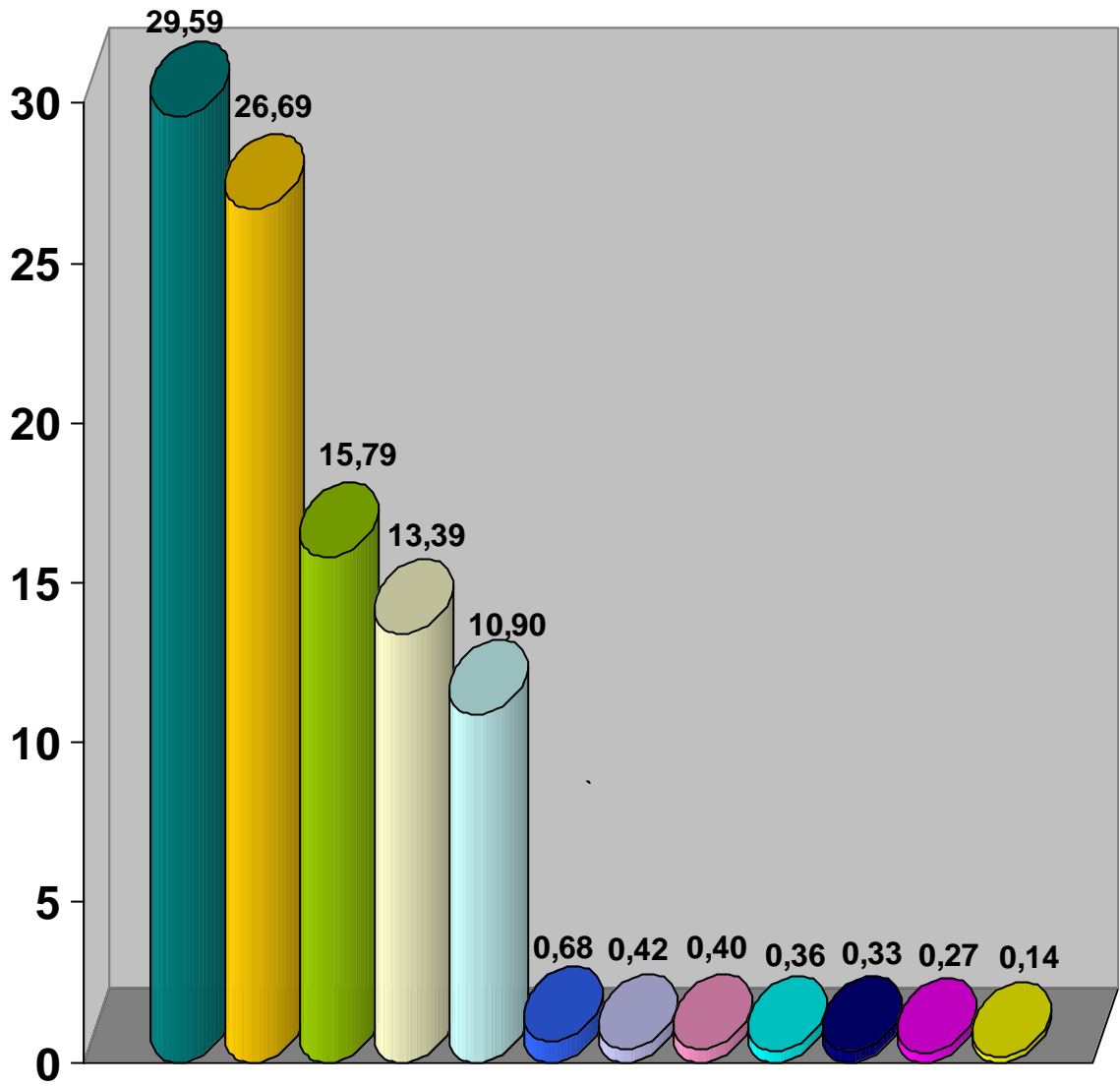
5. NUMĂRUL SPECTATORILOR REALIZAT CU TOATE FILMELE DIFUZATE
PE DISTRIBUTORI

ADMISSIONS ACCORDING TO MAJOR DISTRIBUTION COMPANIES

2013 - 2017

Distribuitori/ Distribution companies	2013 %	2014 %	2015 %	2016 %	2017 %
Vertical Entertainment		792.309 7,79	2.326.223 20,83	3.689.009 28,30	4.106.904 29,59
Ro -Image 2000	1.855.701 20,51	1.820.820 17,90	3.625.599 32,47	3.331.886 25,56	3.703.283 26,69
Forum Film Romania	1.647.234 18,20	1.997.512 19,64	2.516.994 22,54	2.481.755 19,04	2.191.279 15,79
Odeon Cineplex	1.152.730 12,74	1.562.658 15,36	993.185 8,89	1.752.916 13,45	1.858.056 13,39
Intercom Film	1.070.654 11,83	1.119.925 11,01	1.328.450 11,90	1.199.535 9,20	1.512.924 10,90
Cine Europa				56.646 0,43	93.742 0,68
Oblique Media					57.813 0,42
Transilvania Film	19.827 0,22	30.567 0,30	87.476 0,78	54.488 0,42	55.962 0,40
Independenta Film	51.172 0,57	86.458 0,85	42.014 0,38	54.363 0,42	50.065 0,36
Micro Film				16.256 0,12	46.076 0,33
VoodooFilms	6.584 0,07	5.449 0,05	4.178 0,04	55.055 0,42	37.959 0,27
Taylor Projects					18.802 0,14
Bad Unicorn					15.954 0,11
Tiff	6.556 0,07	9.317 0,09	14.625 0,13	9.730 0,07	12.035 0,09
Mandragora				30.350 0,23	10.350 0,07
Asociatia Culturala Macondo	16.399 0,18		11.388 0,10	9.602 0,07	3.270 0,02
Clorofilm	19.626 0,22	22.575 0,22	19.496 0,17	17.524 0,13	1.322 0,01
Zazu Film		87.288 0,86	24.118 0,22	137.790 1,06	
Mediapro Distribution	2.719.084 30,05	2.468.626 24,27			
Hollywood Multiplex	265.068 2,93	29.751 0,29			
Alti distribuitori/ Others	217.622 2,41	138.389 1,36	85.105 0,76	136.782 1,05	101.674 0,73
TOTAL	9.048.257	10.171.644	11.166.861	13.033.687	13.877.470

**COTA DE PIAȚĂ A PRINCIPALILOR DISTRIBUITORI/
 MARKET SHARE OF MAJOR DISTRIBUTION COMPANIES
 ANUL/ YEAR 2017**



Vertica Entertainment	Ro-Image 2000
Forum Film Romania	Odeon Cineplex
Intercom Film	Cine Europa
Oblique Media	Transilvania Film
Independenta Film	Micro Film
Voodoo Films	Taylor Projects

6. PRIMELE 20 DE CINEMATOGRAFE CU UN ECRAN, DUPĂ NUMĂRUL SPECTATORILOR/
 THE TOP 20 CINEMAS BY ADMISSIONS
 ANUL / YEAR 201

Nr. Crt.	Cinematograf/ Cinema	Localitatea/ Town	Număr Locuri/ Number of seats	Număr Spectatori/ Admissions
1	ION MANOLE	GALAȚI	520	109 271
2	ARTA	SIBIU	230	96 355
3	DACIA	BISTRIȚA	154	80 826
4	ELVIRA POPESCU	BUCUREȘTI	239	63 488
5	VICTORIA	CLUJ NAPOCA	283	61 445
6	FLORIN PIERSIC	CLUJ NAPOCA	720	49 774
7	DACIA	RESIȚA	402	49 118
8	AUREL ELEFTERESCU	CALARASI	159	43 625
9	METACOM-SATU MARE	SATU MARE	70	35 869
10	CAPITOL	ONESTI	296	34 026
11	PATRIA	CRAIOVA	708	29 306
12	BELA LUGOSI	LUGOJ	138	26 648
13	DACIA	PIATRA NEAMȚ	629	22 639
14	SERGIU NICOLAESCU	TG. JIU	300	22 357
15	LUNA	CANANSEBEȘ	204	21 676
16	LUCEAFARUL	VULCAN	234	20 829
17	GEO SAIZESCU	RM. VÂLCEA	174	20 328
18	MUZEUL ȚĂRANULUI ROMÂN	BUCUREȘTI	337	17 676
19	MELODIA	DOROHOI	236	17 632
20	COTROCENI	BUCUREȘTI	94	16 768

**7.CINEMATOGRAFE MULTIECRAN ȘI MULTIPLEXURI ÎN FUNCȚIUNE/
MULTISCREENS AND MULTIPLEXES 2017**

<i>Cinematograf/ Cinema</i>	<i>Localitate/ Town</i>	<i>Ecrane/ Screens</i>	<i>Locuri/ Seats</i>	<i>Spectatori/ Admissions</i>
CITYPLEX TULCEA	Tulcea	2	212	20 003
CITYPLEX BÂRLAD	Bârlad	2	237	31 898
CITYPLEX VASLUI	Vaslui	2	150	31 561
CITYPLEX ARTA	Sf. Gheorghe	2	156	37 941
COLOURS CINEMA	Craiova	2	187	37 688
CINEMA SLATINA	Slatina	2	86	35 596
HAPPY CINEMA FOCȘANI	Focșani	2	217	88 310
LINE CINEMA RM.VÂLCEA	Rm.Vâlcea	2	193	44 928
LINE CINEMA TÂRGOVIȘTE	Târgoviște	2	222	87 651
HAPPY CINEMA BUZĂU	Buzău	3	385	118 133
COLOURS CINEMA	Alba Iulia	3	309	111 255
CITYPLEX TOMIS CONSTANȚA	Constanța	4	679	48 560
CINEMA CITY IAȘI	Iași	5	865	483 083
CINE GRAND UVERTURA MALL	Botoșani	5	446	98 912
CINEMA CITY PLOIEȘTI AFI	Ploiești	6	1270	103 115
CINEMA CITY TÂRGU JIU	Târgu Jiu	6	939	117 682
CINEMA CITY DEVA	Deva	6	1087	173 428
CINEMA CITY DROBETA TURNU SEVERIN	Drobeta Turnu Severin	6	939	92 295

CINEMA CITY PITEȘTI	Pitești	6	1264	212 193
CINEMA CITY BAIA MARE	Baia Mare	6	1151	224 381
CINEMA PALACE ORADEA	Oradea	6	685	296 035
CINEMA CITY PIATRA NEAMȚ	Piatra Neamț	6	992	187 579
INSPIRE CINEMA CRAIOVA	Craiova	6	565	219 487
CINEMA CITY TIMIȘOARA	Timișoara	7	951	320 807
CINE GRAND IRIS TITAN	București	7	950	140 904
HAPPY CINEMA BUCUREȘTI	București	7	1145	148 829
CINEMA TRIVALE PITEȘTI	Pitești	8	785	149 838
CINEMA CITY CLUJ NAPOCA POLUS	Cluj Napoca	8	1792	355 817
CINEMA ONE BRAȘOV	Brașov	8	1470	558 276
CINEMA CITY BACĂU	Bacău	8	1324	299 668
CINEMA CITY GALAȚI	Galați	8	1383	72 623
CINEMA CITY TÂRGU MUREȘ	Târgu Mureș	8	1465	265 591
CINEMA CITY CONSTANȚA	Constanța	8	1774	322 499
CINEMA CITY SUCEAVA	Suceava	8	1346	289 532
CINEMA CITY CONSTANȚA PARK	Constanța	10	1692	453 418
HOLLYWOOD MULTIPLEX	București	10	2125	339 417
CINEMA CITY BRĂILA	Brăila	10	1724	358 252

CINEMA CITY ARAD	Arad	10	1628	289 579
CINEMA CITY CLUJ NAPOCA	Cluj	10	1670	450 986
MOVIEPLEX CINEMA	București	11	2564	704 419
CINEMA CITY PLOIEȘTI NEPI	Ploiești	12	2088	380 588
GRAND CINEMA DIGIplex	București	13	2654	956 257
CINEMA CITY TIMIȘOARA NEPI	Timișoara	13	2531	481 609
CINEMA CITY MEGA MALL	București	14	2366	611 586
CINEMA CITY PARK LAKE	București	14	1966	428 845
CINEMA CITY SUN PLAZA	București	15	2835	515 152
CINEMA CITY COTROCENI	București	21	4319	1 001 637

CINEMA CITY COTROCENI

Sali cinematograf/ Screens	Numar locuri/ Number of seats	Numar spectatori/ Admissions
1	31	13 573
2	27	9 504
3	30	10 727
4	166	37 644
5	199	37 428
6	283	56 403
7	217	44 776
8	329	75 308
9	297	90 375
10	365	105 627
11	283	63 779
12	252	49 339
13	256	53 419
14	92	24 288
15	171	30 679
16	175	35 621
17	197	30 458
18	188	34 292
19	178	22 653
20	185	27 281
21-IMAX	398	148 463
Total	4 319	1 001 637

CINEMA CITY SUN PLAZA

Sali cinematograf/ Screens	Numar locuri/ Number of seats	Numar spectatori/ Admissions
1	157	24 827
2	262	53 893
3	229	38 990
4	312	50 306
5	131	22 653
6	105	27 071
7	88	16 788
8	81	15 806
9	105	17 831
10	138	23 117
11	138	30 567
12	228	40 440
13	242	35 466
14	216	37 647
15	403	79 750
Total	2 835	515 152

CINEMA CITY MEGA MALL

Sali cinematograf/ Screens	Numar locuri/ Number of seats	Numar spectatori/ Admissions
1	97	24 253
2	195	54 171
3	125	34 928
4	115	26 023
5	124	34 725
6	128	89 849
7	193	48 673
8	93	21 203
9	101	24 973
10	175	39 085
11	356	77 776
12	328	63 387
13	168	30 285
14	168	42 255
Total	2 366	611 586

CINEMA CITY PARK LAKE

Sali cinematograf/ Screens	Numar locuri/ Number of seats	Numar spectatori/ Admissions
1	118	23 181
2	125	30 755
3	119	28 704
4	132	29 185
5	113	25 404
6	105	23 196
7	195	47 977
8	189	42 827
9	237	50 494
10	316	68 437
11	171	34 466
12	60	10 855
13	50	7 248
14	37	6 116
Total	1 966	428 845

GRAND CINEMA DIGIPLEX BUCUREȘTI

Sali cinematograf/ Screens	Numar locuri/ Number of seats	Numar spectatori/ Admissions
1	363	126 714
2	303	112 176
3	105	59 117
4	105	59 048
5	177	78 901
6	480	102 835
7	480	119 461
8	43	16 117
9	43	15 534
10	155	73 720
11	207	84 305
12	97	55 294
13	97	53 035
Total	2 654	956 257

CINEMA CITY TIMIȘOARA NEPI

Sali cinematograf/ Screens	Numar locuri/ Number of seats	Numar spectatori/ Admissions
1	314	54 172
2	151	29 497
3	138	26 905
4	124	24 978
5	221	38 620
6	221	32 123
7	131	23 876
8- IMAX	409	76 751
9	135	23 702
10	143	21 060
11	103	16 559
12	144	68 814
13	297	44 552
Total	2 531	481 609

CINEMA CITY PLOIEȘTI

Sali cinematograf/ Screens	Numar locuri/ Number of seats	Numar spectatori/ Admissions
1	259	42 607
2	129	19 581
3	152	28 653
4	202	35 250
5	101	24 191
6	93	15 644
7	186	31 601
8	283	51 441
9	310	70 646
10	159	27 447
11	129	18 436
12	85	15 091
Total	2 088	380 588

MOVIEPLEX BUCUREȘTI

Sali cinematograf/ Screens	Numar locuri/ Number of seats	Numar spectatori/ Admissions
1	188	56 435
2	178	49 096
3	188	50 223
4	123	40 626
5	88	38 019
6	347	72 620
7	199	63 342
8	472	106 602
9	213	54 372
10	245	72 582
11	323	100 502
Total	2 564	704 419

HOLLYWOOD MULTIPLEX BUCUREȘTI MALL

Sali cinematograf/ Screens	Numar locuri/ Number of seats	Numar spectatori/ Admissions
1	270	42 855
2	131	17 322
3	396	53 756
4	131	18 823
5	270	37 371
6	155	31 464
7	155	29 294
8	307	48 507
9	155	32 380
10	155	27 645
Total	2 125	339 417

CINEMA CITY CONSTANȚA PARK

Sali cinematograf/ Screens	Numar locuri/ Number of seats	Numar spectatori/ Admissions
1	118	26 871
2	144	71 635
3	343	75 900
4	142	37 252
5	152	41 718
6	131	33 942
7	135	37 303
8	99	25 646
9	180	48 536
10	248	54 615
Total	1692	453 418

CINEMA CITY ARAD

Sali cinematograf/ Screens	Numar locuri/ Number of seats	Numar spectatori/ Admissions
1	262	43 808
2	162	28 498
3	108	16 421
4	78	13 070
5	281	60 325
6	125	24 062
7	125	22 645
8	124	23 053
9	115	17 575
10	248	40 122
Total	1 628	289 579

CINEMA CITY CLUJ-NAPOCA

Sali cinematograf/ Screens	Numar locuri/ Number of seats	Numar spectatori/ Admissions
1	174	38 219
2	174	40 070
3	174	33 568
4	174	35 045
5	66	23 842
6	207	51 318
7	217	70 291
8	218	87 860
9	200	46 067
10	66	24 706
Total	1 670	450 986

CINEMA CITY BRĂILA

Sali cinematograf/ Screens	Numar locuri/ Number of seats	Numar spectatori/ Admissions
1	256	43 974
2	256	54 574
3	344	70 443
4	278	45 721
5	115	30 259
6	106	26 862
7	77	18 799
8	106	26 637
9	93	20 432
10	93	20 551
Total	1 724	358 252

CINEMA CITY BACĂU

Sali cinematograf/ Screens	Numar locuri/ Number of seats	Numar spectatori/ Admissions
1	192	41 440
2	105	27 638
3	105	28 505
4	209	45 656
5	308	65 186
6	165	35 948
7	105	24 808
8	135	30 487
Total	1 324	299 668

CINEMA CITY TÂRGU MUREȘ

Sali cinematograf/ Screens	Numar locuri/ Number of seats	Numar spectatori/ Admissions
1	326	67 649
2	186	37 197
3	141	22 700
4	109	18 843
5	126	24 671
6	152	28 435
7	139	26 832
8	286	39 264
Total	1465	265 591

CINEMA CITY GALAȚI

Sali cinematograf/ Screens	Numar locuri/ Number of seats	Numar spectatori/ Admissions
1	104	7 315
2	193	9 796
3	323	10 913
4	105	7 316
5	100	5 717
6	124	8 059
7	222	11 217
8	210	12 290
Total	1381	72 623

CINEMA CITY CONSTANȚA

Sali cinematograf/ Screens	Numar locuri/ Number of seats	Numar spectatori/ Admissions
1	225	43 392
2	159	33 682
3	170	23 145
4	191	35 498
5	335	52 889
6	353	70 332
7	159	30 304
8	182	33 257
Total	1 774	322 499

CINEMA CITY CLUJ - NAPOCA POLUS

Sali cinematograf/ Screens	Numar locuri/ Number of seats	Numar spectatori/ Admissions
1	180	35 190
2	244	39 886
3	269	59 417
4	269	62 450
5	156	28 616
6	180	33 295
7	276	60 560
8	218	36 403
Total	1 792	355 817

CINEMA ONE BRAȘOV

Sali cinematograf/ Screens	Numar locuri/ Number of seats	Numar spectatori/ Admissions
1	333	111 897
2	200	75 300
3	92	40 338
4	167	69 590
5	167	67 466
6	228	87 861
7	157	55 248
8	127	50 576
Total	1471	558 276

CINEMA CITY SUCEAVA

Sali cinematograf/ Screens	Numar locuri/ Number of seats	Numar spectatori/ Admissions
1	288	65 838
2	225	43 169
3	132	31 241
4	106	26 323
5	79	22 184
6	114	26 105
7	191	35 120
8	211	39 552
Total	1 346	289 532

CINEMA CITY TIMIȘOARA

Sali cinematograf/ Screens	Numar locuri/ Number of seats	Numar spectatori/ Admissions
1	215	65 250
2	112	42 875
3	112	41 849
4	112	41 168
5	317	81 730
6	41	23 136
7	42	24 799
Total	951	320 807

CINEMA TRIVALE PITEȘTI

Sali cinematograf/ Screens	Numar locuri/ Number of seats	Numar spectatori/ Admissions
1	144	30 092
2	176	35 347
3	84	22 009
4	95	16 965
5	140	23 506
6	40	8 630
7	88	13 238
8	18	51
Total	785	149 838

CINEMA HAPPY BUCUREȘTI

Sali cinematograf/ Screens	Numar locuri/ Number of seats	Numar spectatori/ Admissions
1	290	17 335
2	411	25 761
3	90	19 859
4	76	16 412
5	76	15 842
6	94	21 856
7	108	31 764
Total	1 145	148 829

CINE GRAND IRIS TITAN

Sali cinematograf/ Screens	Numar locuri/ Number of seats	Numar spectatori/ Admissions
1	178	28 900
2	186	26 325
3	186	27 483
4	78	10 493
5	78	9 824
6	122	22 729
7	122	15 150
Total	950	140 904

CINEMA CITY PITEȘTI

Sali cinematograf/ Screens	Numar locuri/ Number of seats	Numar spectatori/ Admissions
1	247	42 713
2	191	29 862
3	197	29 786
4	158	23 607
5	131	25 221
6	340	61 004
Total	1 264	212 193

CINEMA CITY BAIA MARE

Sali cinematograf/ Screens	Numar locuri/ Number of seats	Numar spectatori/ Admissions
1	259	39 191
2	158	31 917
3	210	36 509
4	139	30 852
5	77	24 195
6	308	61 717
Total	1 151	224 381

CINEMA CITY PLOIEȘTI AFI

Sali cinematograf/ Screens	Numar locuri/ Number of seats	Numar spectatori/ Admissions
1	109	11 444
2	147	12 492
3	216	16 759
4	190	15 138
5	297	26 216
6	311	21 066
Total	1 270	103 115

CINEMA CITY DEVA

Sali cinematograf/ Screens	Numar locuri/ Number of seats	Numar spectatori/ Admissions
1	313	54 236
2	220	31 891
3	165	25 127
4	165	21 213
5	139	22 156
6	85	18 805
Total	1 087	173 428

CINEMA CITY DROBETA TURNU SEVERIN

Sali cinematograf/ Screens	Numar locuri/ Number of seats	Numar spectatori/ Admissions
1	129	12 109
2	181	14 912
3	93	8 838
4	93	10 691
5	180	16 040
6	263	29 705
Total	939	92 295

CINEMA PALACE ORADEA

Sali cinematograf/ Screens	Numar locuri/ Number of seats	Numar spectatori/ Admissions
1	132	53 643
2	188	73 206
3	168	67 048
4	69	34 117
5	69	32 792
6	59	35 229
Total	685	296 035

CINEMA CITY TÂRGU JIU

Sali cinematograf/ Screens	Numar locuri/ Number of seats	Numar spectatori/ Admissions
1	317	37 534
2	122	14 861
3	100	13 444
4	93	11 322
5	176	18 320
6	229	22 201
Total	1037	117 682

CINEMA CITY PIATRA NEAMȚ

Sali cinematograf/ Screens	Numar locuri/ Number of seats	Numar spectatori/ Admissions
1	94	19 575
2	200	33 316
3	330	52 722
4	114	25 438
5	108	24 623
6	146	31 905
Total	992	187 579

CINEMA INSPIRE CRAIOVA

Sali cinematograf/ Screens	Numar locuri/ Number of seats	Numar spectatori/ Admissions
1	100	43 566
2	94	34 194
3	88	24 844
4	92	39 667
5	95	34 443
6	96	42 773
Total	565	219 487

CINEMA CITY IAȘI

Sali cinematograf/ Screens	Numar locuri/ Number of seats	Numar spectatori/ Admissions
1	245	133.248
2	245	117.853
3	187	101.652
4	94	63.515
5	94	66.815
Total	865	483.083

CINE GRAND UVERTURA MALL BOTOȘANI

Sali cinematograf/ Screens	Numar locuri/ Number of seats	Numar spectatori/ Admissions
1	93	22 231
2	93	22 232
3	82	17 257
4	103	25 751
5	75	11 441
Total	446	98 912

CITYPLEX TOMIS CONSTANȚA

Sali cinematograf/ Screens	Numar locuri/ Number of seats	Numar spectatori/ Admissions
1	135	7 852
2	203	16 629
3	207	17 737
4	134	6 342
TOTAL	679	48 560

COLOURS CINEMA ALBA IULIA

Sali cinematograf/ Screens	Numar locuri/ Number of seats	Numar spectatori/ Admissions
1	111	41 467
2	111	42 932
3	87	26 856
Total	309	111 255

CINEMA HAPPY BUZĂU

Sali cinematograf/ Screens	Numar locuri/ Number of seats	Numar spectatori/ Admissions
1	178	52 873
2	106	38 651
3	101	26 609
Total	385	118 133

CITYPLEX TULCEA

Sali cinematograf/ Screens	Numar locuri/ Number of seats	Numar spectatori/ Admissions
1	131	9 350
2	81	10 653
Total	212	20 003

CITYPLEX BÂRLAD

Sali cinematograf/ Screens	Numar locuri/ Number of seats	Numar spectatori/ Admissions
1	165	30 917
2	72	981
Total	237	31 898

CITYPLEX VASLUI

Sali cinematograf/ Screens	Numar locuri/ Number of seats	Numar spectatori/ Admissions
1	75	16 964
2	75	14 597
Total	150	31 561

3D COLOURS CRAIOVA

Sali cinematograf/ Screens	Numar locuri/ Number of seats	Numar spectatori/ Admissions
1	118	25 601
2	69	12 087
Total	187	37 688

CINEMA HAPPY FOCȘANI

Sali cinematograf/ Screens	Numar locuri/ Number of seats	Numar spectatori/ Admissions
1	109	47 836
2	108	40 476
Total	217	88 310

EUGEN IONESCU SLATINA

Sali cinematograf/ Screens	Numar locuri/ Number of seats	Numar spectatori/ Admissions
1	43	12 835
2	43	22 761
Total	86	35 596

CINEMA ARTA BY CITYPLEX SFANTU GHEORGHE

Sali cinematograf/ Screens	Numar locuri/ Number of seats	Numar spectatori/ Admissions
1	75	21 680
2	81	16 261
Total	156	37 941

8. CINEMATOGRAFE DE ARTĂ 2017
THE MAIN ART CINEMAS

Cinematograf/cinema localitate/town nr.locuri/number of seats	Spectacole/ Screenings 2017	Spectatori/ Admissions 2017
VICTORIA - Cluj_Napoca (283 locuri/seats)	1 636	61 445
ELVIRA POPESCU_București (239 locuri/seats)	903	63 488
NOUL CINEMATOGRAF AL REGIZORULUI ROMAN București (304 locuri/seats)	482	17 675
CITYPLEX CONSTANȚA -sala 4 (134 locuri/seats)	1 643	6 342
EUROPA_București (273 locuri/seats)	844	5 366
CITYPLEX VICTORIA Bârlad- sala2 (72 locuri/seats)	740	981
MODERN - Craiova (175 locuri/seats)	256	1 215
UNION - București (130 locuri/seats)	745	9 362
EFORIE - București (250 locuri/ seats)	484	8 322

9.TOP 20 DE FILME DUPĂ NUMARUL SPECTATORILOR
THE TOP 20 RELEASED FEATURE FILMS BY ADMISSIONS
Anul / Year 2017

1. FURIOS SI IUTE 8	/US	677.152
FAST & FURIOUS 8/RO-IMAGE 2000		
2. PIRATII DIN CARAIBE: RAZBUNAREA LUI SALAZAR	/US	412.387
PIRATES OF THE CARIBBEAN: DEAD MEN TELL NO TALES/ FORUM FILM ROMANIA		
3. CINCIZECI DE UMBRE INTUNECATE	/US	367.536
FIFTY SHADES DARKER/RO-IMAGE 2000		
4. THOR: RAGNAROK	/US	348.605
THOR: RAGNAROK/FORUM FILM ROMANIA		
5. FRUMOASA SI BESTIA	/US	303.050
BEAUTY AND THE BEAST/FORUM FILM ROMANIA		
6. STAR WARS: ULTIMII JEDI	/US	302.151
STAR WARS: THE LAST JEDI/FORUM FILM ROMANIA		
7. THE BOSS BABY: CINE-I SEF ACASA?	/US	281.082
THE BOSS BABY/ODEON CINEPLEX		
8. SUNT UN MIC TICALOS 3	/US	269.187
DESPICABLE ME 3/RO-IMAGE 2000		
9. LIGA DREPTATII	/US	263.832
JUSTICE LEAGUE/VERTICAL ENTERTAINMENT		
10. ASSASSIN'S CREED: CODUL ASASINULUI	/US/GB/FR	250.179
ASSASSIN'S CREED/ODEON CINEPLEX		
11. DE CE EL?	/US	245.056
WHY HIM?/ODEON CINEPLEX		
12. CRIMA DIN ORIENT EXPRESS	/US/GB/MT	232.684
MURDER ON THE ORIENT EXPRESS/ODEON CINEPLEX		
13. LOGAN	/US/CA/AU	230.362
LOGAN/ODEON CINEPLEX		
14. TRIPLU X: INTOARCEREA LUI XANDER CAGE	/CA/US	225.785
XXX: RETURN OF XANDER CAGE/RO-IMAGE 2000		
15. GARDIENII GALAXIEI VOL. 2	/US/NZ/CA	210.227
GUARDIANS OF THE GALAXY VOL.2/FORUM FILM ROMANIA		
16. KONG: INSULA CRANIILOR	/US	203.145
KONG: SKULL ISLAND/VERTICAL ENTERTAINMENT		
17. OMUL-PAIANJEN: INTOARCEREA ACASA	/US	195.067
SPIDER-MAN: HOMECOMING/INTERCOMFILM DISTRIBUTION		
18. PLANETA MAIMUTELOR: RAZBOIUL	/US/CA/NZ	194.548
WAR FOR THE PLANET OF THE APES/ODEON CINEPLEX		
19. WONDER WOMAN	/US	194.157
WONDER WOMAN/VERTICAL ENTERTAINMENT		
20. MAME BUNE SI NEBUNE 2	/US	194.057
A BAD MOMS CHRISTMAS/VERTICAL ENTERTAINMENT		

10.TOP 20 FILME EUROPENE DUPĂ NUMARUL SPECTATORILOR
THE TOP 20 EUROPEAN FEATURE FILMS BY ADMISSIONS
Anul / Year 2017

1. DUNKIRK	/GB/NL/FR/US	164.410
DUNKIRK/VERTICAL ENTERTAINMENT		
2. CRAIASA ZAPEZII: FOC SI GHEATA	/RU	119.559
THE SNOW QUEEN 3/VERTICAL ENTERTAINMENT		
3. BALERINA	/FR/CA	99.113
BALLERINA/VERTICAL ENTERTAINMENT		
4. BIGFOOT JUNIOR	/BE/FR	85.350
THE SON OF BIGFOOT/VERTICAL ENTERTAINMENT		
5. FAMILIA MONSTRULESCU	/DE/GB	76.419
HAPPY FAMILY/RO-IMAGE 2000		
6. RESIDENT EVIL: CAPITOLUL FINAL	/DE/CA/AU/FR	74.668
RESIDENT EVIL: THE FINAL CHAPTER/ INTERCOMFILM DISTRIBUTION		
7. PADDINGTON 2	/GB/FR	65.257
PADDINGTON 2/VERTICAL ENTERTAINMENT		
8. SAROO: DRUMUL SPRE ACASA	/GB/AU/US	61.439
LION/FORUM FILM ROMANIA		
9. DEEP: O AVENTURA NESFARSITA	/ES	53.929
DEEP/VERTICAL ENTERTAINMENT		
10. MICUL VAMPIR	/DK/DE/NL	47.353
THE LITTLE VAMPIRE/RO-IMAGE 2000		
11. OVERDRIVE	/FR	40.939
OVERDRIVE/VERTICAL ENTERTAINMENT		
12. BARZOIUL RICHARD	/NO/DE/LX/BE	36.923
RICHARD THE STORK/RO-IMAGE 2000		
13. FANTASTICA AVENTURA DIN OZ	/RU	35.083
FANTASTIC JOURNEY TO OZ/VERTICAL ENTERTAINMENT		
14. RENEGATII	/FR/BE/DE/US	31.443
RENEGADES/RO-IMAGE 2000		
15. FEBRA LALELELOR	/GB/US	29.876
TULIP FEVER/FORUM FILM ROMANIA		
16. O POLITISTA IREZISTIBILA - FUGI, DACA POTI!	/FR/BE	23.068
RAID DINGUE/CINE EUROPA		
17. UNLOCKED PERICOL DESCATUSAT	/CZ/CH/US/GB	22.809
UNLOCKED/FORUM FILM ROMANIA		
18. TE-NSORI CU MINE, BRO'?	/FR	22.146
EPOUSE-MOI MON POTE/RO-IMAGE 2000		
19. PATRULA JUNGLEI	/FR	20.935
THE JUNGLE BUNCH/RO-IMAGE 2000		
20. OZZY: MAREA EVADARE	/ES/CA	18.960
OZZY/CINE EUROPA		

11. TOP 20 FILME DE PREMIERA ROMANESTI DUPA NUMARUL DE SPECTATORI
THE TOP 20 OF FIRST-RELEASE NATIONAL FEATURE FILMS BY ADMISSIONS
Anul / Year 2017

1) OCTAV		57.813
SERGIU IOAN CELIBIDACHE	/OBLIQUE MEDIA/2017	
2) GHINIONISTUL		53.898
IURA LUNCASU	/VERTICAL ENTERTAINMENT/2017	
3) 6,9 PE SCARA RICHTER		32.821
NAE CARANFIL	/VOODOO FILMS/2017	
4) UN PAS IN URMA SERAFIMILOR		32.566
DANIEL SANDU	/MICRO FILM/2017	
5) ANA, MON AMOUR		29.131
CALIN NETZER	/VERTICAL ENTERTAINMENT/2017	
6) HAWAII		25.676
JESUS DEL CERRO	/RO-IMAGE 2000/2017	
7) POVESTEA IUBIRII		18.077
RADU MIHAILEANU	/TRANSILVANIA FILM/2017	
8) BREAKING NEWS		6.636
IULIA RUGINA	/TRANSILVANIA FILM/2017	
9) FIXEUR		5.893
ADRIAN SITARU	/DOMESTIC FILM/2017	
10) VARA S-A SFARSIT		5.551
RADU POTCOAVA	/ICON PRODUCTION/2017	
11) PLANETA PETRILA		5.361
ANDREI DASCALESCU	/TRANSILVANIA FILM/2017	
12) TARA MOARTA		5.269
RADU JUDE	/MICRO FILM/2017	
13) MARITA		3.548
CRISTI IFTIMIE	/MICRO FILM/2017	
14) LA DRUM CU TATA		2.544
ANCA MIRUNA LAZARESCU	/STRADA FILM/2017	
15) DEPARTE DE TINE		2.502
JAMES PILLION	/MOVIE PRODUCTION ENTERTAINMENT/2017	
16) OUALE LUI TARZAN		2.110
ALEXANDRU SOLOMON	/MICRO FILM/2017	
17) RAZBUNAREA TIGANCII - PALARIA FATALA SI NAZISTUL		1.922
ADRIAN MUNTEANU	/NAPOCA FILM/2017	
18) MEDA SAU PARTEA NU PREA FERICITA A LUCRURILOR		1.829
EMANUEL PARVU	/ASOCIATIA FAMART/2017	
19) CAPACE		1.420
SORIN MARIN	/BOMB FILM PRODUCTION/2017	
20) PERFECT SANATOS		1.412
ANCA DAMIAN	/APARTE FILM/2017	

12.TOP 20 FILME ROMÂNESTI DUPA NUMARUL SPECTATORILOR 2013-2017
THE TOP 20 OF FIRST-RELEASE NATIONAL FEATURE FILMS BY ADMISSIONS
2013-2017

1. #SELFIE 69		133.665
CRISTINA IACOB	/ZAZU FILM/2016	
2. DOUA LOZURI		128.605
PAUL NEGOESCU	/RO-IMAGE 2000/2016	
3. POZITIA COPILULUI		112.134
CALIN PETER NETZER	/PARADA FILM/2013	
4. #SELFIE		87.653
CRISTINA IACOB	/ZAZU FILM/2014	
5. AFERIM!		75.401
RADU JUDE	/PARADA FILM/2015	
6. OCTAV		57.813
SERGIU IOAN CELIBIDACHE	/OBLIQUE MEDIA/2017	
7. BACALAUREAT		55.384
CRISTIAN MUNGIU	/VOODOO FILMS/2016	
8. GHINIONISTUL		53.898
IURA LUNCASU	/VERTICAL ENTERTAINMENT/2017	
9. DE CE EU?		51.948
TUDOR GIURGIU	/TRANSILVANIA FILM/2015	
10. SIERANEVADA		40.567
CRISTI PUIU	/MANDRAGORA/2016	
11. 6,9 PE SCARA RICHTER		32.821
NAE CARANFIL	/VOODOO FILMS/2017	
12. UN PAS IN URMA SERAFIMILOR		32.566
DANIEL SANDU	/MICRO FILM/2017	
13. ANA, MON AMOUR		29.131
CALIN NETZER	/VERTICAL ENTERTAINMENT/2017	
14. POVESTE DE DRAGOSTE		28.513
CRISTINA IACOB	/ZAZU FILM/2015	
15. FUNERALII FERICITE		28.181
HORATIU MALAIELE	/MEDIAPRO DISTRIBUTION/2013	
16. LOVE BUILDING		26.769
IULIA RUGINA	/MEDIAPRO DISTRIBUTION/2013	
17. HAWAII		25.676
JESUS DEL CERRO	/RO-IMAGE 2000/2017	
18. DOMNISOARA CHRISTINA		23.796
ALEXANDRU MAFTEI	/ABIS STUDIO/2013	
19. CUSCRII		23.507
RADU POTCOAVA	/INTERCOMFILM DISTRIBUTION/2014	
20. AMERICA, VENIM!		22.408
RAZVAN SAVESCU	/TRANSILVANIA FILM/2014	