

**III. EXPLOATAREA CINEMATOGRAFICA  
EXHIBITION**

**1. DATE GENERALE 2011 - 2015**

GENERAL OVERVIEW BETWEEN 2011 - 2015

**2. STATISTICA GENERALA PRIVIND REȚEAUA CINEMATOGRAFICA**

GENERAL STATISTICS REGARDING THE EXHIBITION

**3. REALIZARILE ANULUI 2015 DUPĂ ȚARA DE ORIGINE/**

ADMISSION ACCORDING TO THE ORIGIN RELEASE FEATURE FILMS 2015

**3.1. NUMAR SPECTATORI REALIZAT CU FILMELE ÎN PREMIERA PE ȚARI  
2011 - 2015**

ADMISSIONS ACCORDING TO THE ORIGIN OF FIRST-TIME RELEASE FILMS.

**3.2. TOTAL SPECTATORI DUPĂ ȚARA DE ORIGINE 2011 - 2015**

ADMISSIONS ACCORDING TO THE ORIGIN OF4 RELEASED FEATURE FILMS

**4. NUMAR SPECTATORI REALIZAT CU FILMELE ÎN PREMIERA, PE DISTRIBUITORI**

ADMISSIONS ACCORDING TO MAJOR DISTRIBUTION COMPANIES OF  
FIRST-TIME RELEASED FILMS

**5. NUMAR SPECTATORI REALIZAT CU TOATE FILMELE DIFUZATE ÎNTRE  
2011 - 2015, PE DISTRIBUITORI /**

ADMISSIONS ACCORDING TO MAJOR DISTRIBUTION COMPANIES

**6. PRIMELE 20 DE CINEMATOGRAFE CU UN ECRAN, DUPĂ NUMARUL SPECTATORILOR**

THE TOP 20 CINEMAS BY ADMISSIONS

**7. CINEMATOGRAFE MULTIECRAN SI MULTIPLEXURI ÎN FUNCȚIUNE**

MULTISCREENS CINEMAS AND MULTIPLEXES

**8. PRINCIPALELE CINEMATOGRAFE DE ARTĂ**

THE MAIN ART CINEMAS

**9. PRIMELE 20 DE FILME DUPĂ NUMARUL SPECTATORILOR - 2015**

THE TOP 20 FEATURE FILMS BY ADMISSIONS - 2015

**10. PRIMELE 10 FILME EUROPENE DUPĂ NUMARUL SPECTATORILOR - 2015**

THE TOP 10 EUROPEAN FEATURE FILMS BY ADMISSIONS - 2015

**11. PRIMELE 10 FILME ROMÂNESTI DUPĂ NUMARUL DE SPECTATORI - 2015**

THE TOP 10 OF FIRST-TIME RELEASE NATIONAL FEATURE FILMS BETWEEN

**12. PRIMELE 20 FILME DE LUNG METRAJ DE FICȚIUNE ROMÂNESTI, IEȘITE ÎN  
PREMIERA ÎN PERIOADA 2011 - 2015, DUPA NUMARUL DE SPECTATORI**

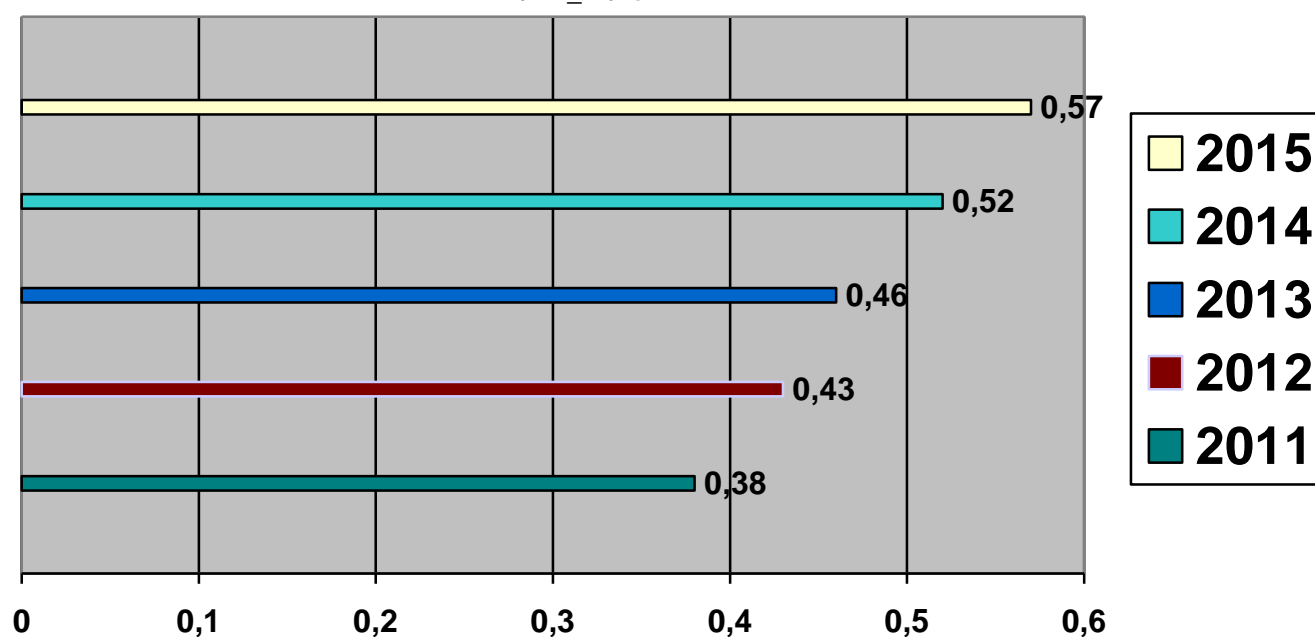
THE TOP 20 OF FIRST-TIME RELEASE NATIONAL FEATURE FILMS BETWEEN  
2009-2015 BY ADMISSION

### III. EXPLOATAREA DE FILME

#### 1. DATE GENERALE PENTRU PERIOADA 2011 – 2015/ GENERAL OVERVIEW BETWEEN 2011 - 2015

Nr. Crt.	Date generale/General data	2011	2012	2013	2014	2015
1.	Cinematografe în funcțiune/ Number of active cinemas	75	81	76	78	82
2.	Locuri /Seats	56 728	58 096	57 248	61 534	68 415
3.	Spectatori /Admissions	7 235 382	8 348 538	9 048 257	10 171.644	11 166 861
4.	Încasări totale (RON)/ Gross box office (RON)	124 706 985	144 793 811	160 523 144	185 201.343	206 868 801
5.	Frecvența pe locuitor/ Average admissions per inhabitant	0,38	0,43	0,46	0,52	0,57
6.	Preț mediu bilet – lei/ Average ticket price – national currency	17,24	17,34	17,74	18,21	18,52

SPECTATORI FILM - FRECVENȚA PE LOCUIȚOR /  
AVERAGE ADMISSIONS PER INHABITANT  
2011 \_ 2015

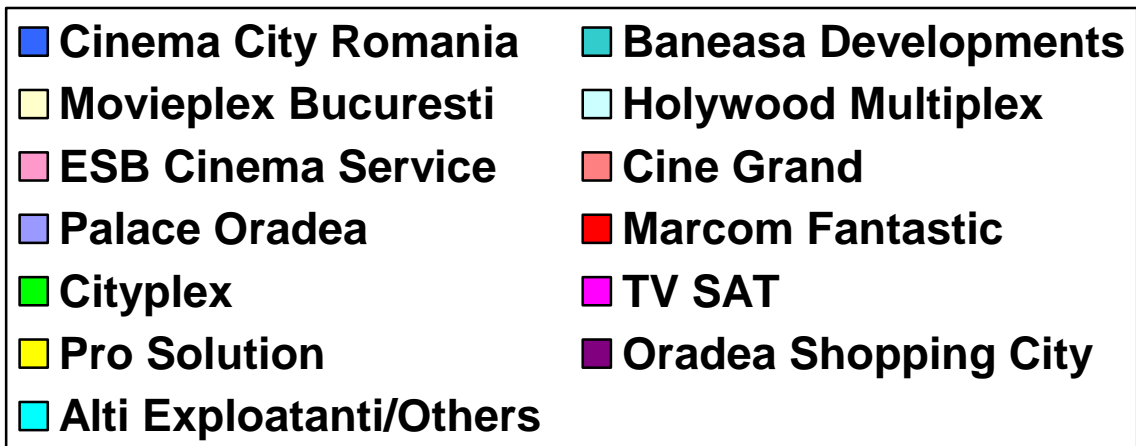
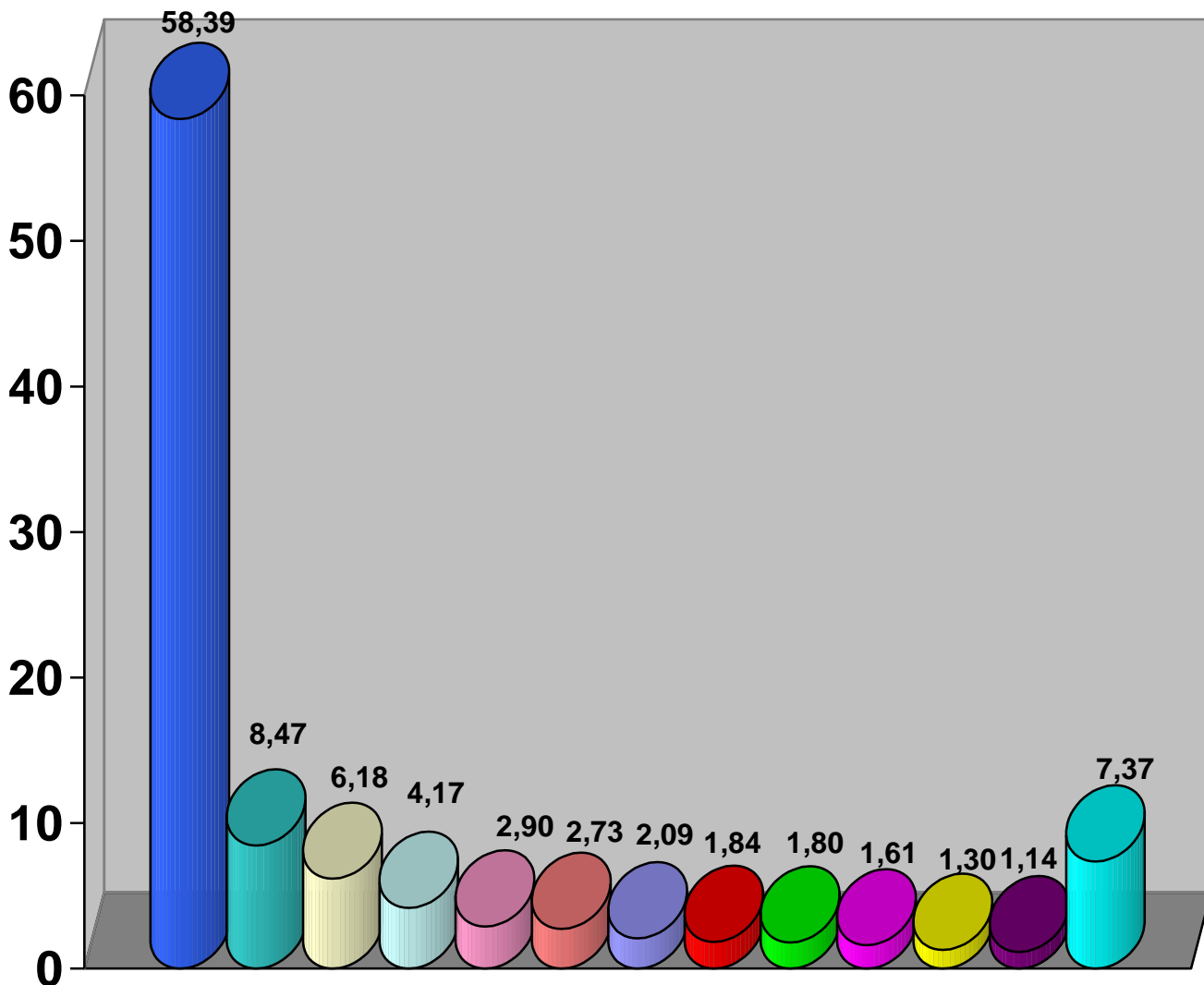


**PRINCIPALELE SOCIETĂȚI DE EXPLOATARE A CINEMATOGRAFELOR**  
**MAJOR EXHIBITION COMPANIES**  
**ANUL / YEAR 2015**

<b>Principalele societati de exploatare a cinematografelor/ Major exhibition companies</b>	<b>Cinematografe în funcțiune/Number of active cinemas</b>	<b>Ecrane/ Screens</b>	<b>Spectatori/ Admissions</b>	<b>Incasari ( RON )/ Gross box office ( RON)</b>
CINEMA CITY ROMANIA	22	198	6 520 875	126 551 279
BANEASA DEVELOPMENTS	1	13	946 372	21 662 239
MOVIEPLEX CINEMA	1	11	690 089	12 849 078
HOLLYWOOD MULTIPLEX OPERATIONS	1	10	465 535	9 727 144
ESB CINEMA SERVICE	1	8	323 985	5 554 499
CINE GRAND SRL	2	12	304 974	5 298 082
CINEMA PALACE ORADEA	1	6	233 076	3 261 569
MARCOM FANTASTIC	4	6	205 688	2592 319
CITYPLEX SRL	4	11	201 064	2 926 568
TV SAT 2000	3	3	179 462	2 459 021
PRO SOLUTION SRL	2	5	145 403	2 351 319
ORADEA SHOPING CITY	1	6	126 795	1 810 808
WINI IMOBILI	1	7	99 187	1 420 218
S.C.INSPIRE THROUGH SRL	1	2	90 368	1 439 223
R.A.D.E.F. ROMANIAFILM	18	18	83 466	682 744
S.C.ROCINEMA SRL	1	2	69 301	1 033 386
CARAVANA	1	1	56 727	353 553
ASOCIATIA VICTORIA FILM	1	1	57 385	475 841
COMPANIA DE EXPLOATARE FILM	1	1	46 904	753 340

<b>BEST SALE SLATINA</b>	<b>1</b>	<b>2</b>	<b>41 910</b>	<b>659 381</b>
<b>INSTITUTUL CULTURAL FRANCEZ</b>	<b>1</b>	<b>1</b>	<b>41 322</b>	<b>376 157</b>
<b>METACOM SATU MARE</b>	<b>1</b>	<b>1</b>	<b>35 245</b>	<b>523 934</b>
<b>CENTRUL CULTURAL JUDEȚEAN CĂLĂRAȘI</b>	<b>1</b>	<b>1</b>	<b>34 585</b>	<b>370 508</b>
<b>PRIMARIA ONEȘTI</b>	<b>1</b>	<b>1</b>	<b>34 460</b>	<b>391 463</b>
<b>U.C.I.N. BUCUREȘTI</b>	<b>1</b>	<b>1</b>	<b>32 701</b>	<b>353 089</b>
<b>PRIMARIA LUGOJ</b>	<b>1</b>	<b>2</b>	<b>25 019</b>	<b>244 322</b>
<b>CINEMA GEO SAIZESCU</b>	<b>1</b>	<b>2</b>	<b>22 345</b>	<b>241 286</b>
<b>VISION P.M</b>	<b>1</b>	<b>1</b>	<b>22 037</b>	<b>256 040</b>
<b>NOUL CINEMATOGRAF AL REGIZORULUI ROMAN</b>	<b>1</b>	<b>1</b>	<b>9 099</b>	<b>84 216</b>
<b>CASA DE CULTURA ODOBEȘTI</b>	<b>1</b>	<b>1</b>	<b>8 372</b>	<b>41 860</b>
<b>CINEMA CLUB TWINS PLOIESTI</b>	<b>1</b>	<b>1</b>	<b>6 656</b>	<b>86 806</b>
<b>D.M.C.SLOBOZIA</b>	<b>1</b>	<b>1</b>	<b>5 422</b>	<b>28 680</b>
<b>ALTI EXPLOATANTI</b>	<b>2</b>	<b>2</b>	<b>1 032</b>	<b>8 837</b>
<b>TOTAL</b>	<b>82</b>	<b>339</b>	<b>11 166 861</b>	<b>206 868 801</b>

**COTA DE PIATA A PRINCIPALILOR EXPLOATANȚI ÎN FUNCȚIE DE SPECTATORI /  
MARKET SHARE ACCORDING TO MAJOR EXHIBITION COMPANIES - 2015**



**2. STATISTICĂ GENERALĂ CU PRIVIRE LA REȚEAUA CINEMATOGRAFICĂ /  
GENERAL STATISTICS REGARDING THE EXHIBITION  
ANUL / YEAR 2015**

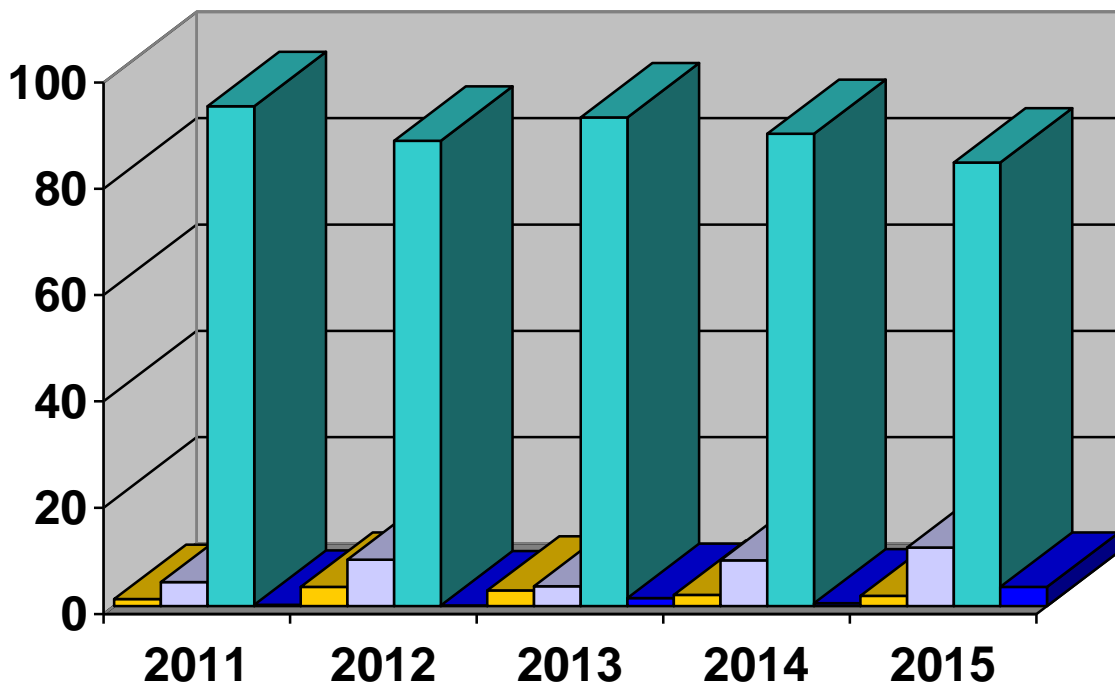
Număr cinematografe în funcțiune/ <i>Number of active cinemas</i>	82
Număr ecrane/ <i>Number of screens</i>	339
Număr locuri/ <i>Number of seats</i>	68.415
Număr locuri per ecran/ <i>Number of seats per screen</i>	201
Număr cinematografe cu 2, 3 sau mai multe ecrane/ <i>Number of multiscreens and multiplexes</i>	40
Număr cinematografe de artă / Europa Cinemas <i>Number of art cinemas /Europa Cinemas</i>	9
Număr spectacole/ <i>Number of screenings</i>	487.743
Număr spectatori/ <i>Admissions</i>	11.166.861
Frecvența pe locuitor/ <i>Average admissions per inhabitant</i>	0,57
Spectatori / spectacol_ <i>Admissions / screening</i>	23
Încasări – RON/ <i>Gross box office – in RON</i>	206.868.801
Preț mediu bilet lei/ <i>Average ticket price (national currencey)</i>	18,52

### 3. REALIZĂRI LE ANULUI 2015 DUPA ȚARA DE ORIGINE

TARA	TOTAL FILME			FILME IN PREMIERA		
	Nr. TITLURI	SPECTATORI	INCASARI	TITLURI	SPECTATORI	INCASARI
	No. TITLE	ADMISSION	BOX OFFICE	No. TITLE	ADMISSION	BOX OFFICE
<b>TOTAL FILME</b>	<b>442</b>	<b>11.166.861</b>	<b>206.868.801</b>	<b>217</b>	<b>10.720.318</b>	<b>198.999.733</b>
RO	57	216.316	2.827.607	22	203.822	2.696.516
US	193	9.259.088	173.778.505	104	8.947.476	167.842.243
<b>EU</b>	<b>160</b>	<b>1.275.601</b>	<b>22.499.688</b>	<b>80</b>	<b>1.184.312</b>	<b>21.128.584</b>
GB	24	513.247	9.680.652	15	464.161	8.776.596
FR	56	472.706	8.063.129	33	464.232	7.995.335
DE	15	90.963	1.553.772	5	89.222	1.538.245
IT	5	3.674	38.509	4	3.406	35.526
ES	5	1.883	17.299	1	1.579	15.116
ALTE TARI (EU)	55	193.128	3.146.327	22	161.712	2.767.766
ALTE TARI	32	415.856	7.763.001	11	384.708	7.332.390

**3.1 NUMĂR DE SPECTATORI REALIZAT CU FILMELE ÎN PREMIERĂ  
DUPĂ ȚARA DE ORIGINE / ADMISSIONS ACCORDING TO THE ORIGIN  
OF FIRST TIME RELEASE FEATURE FILMS  
2011 – 2015**

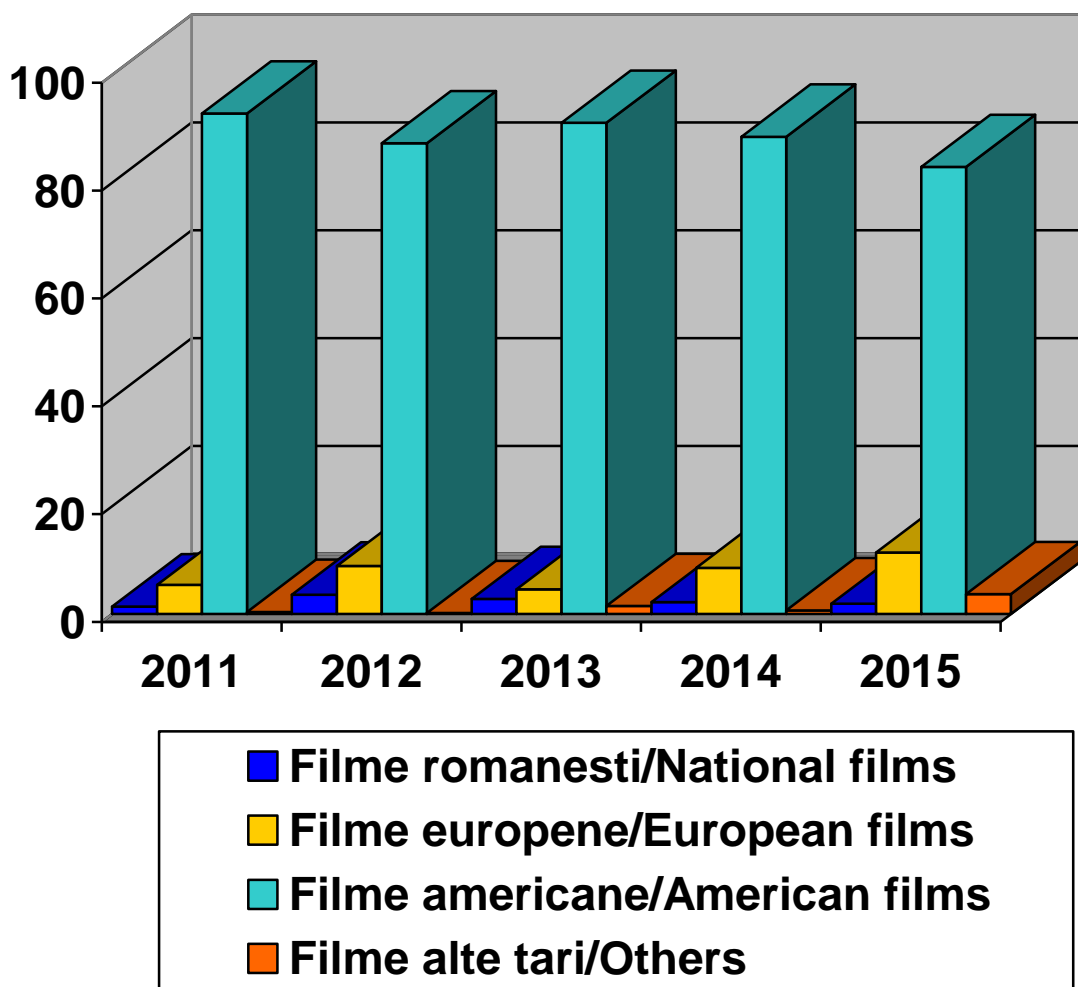
Țara de origine/ Film origin	2011 %	2012 %	2013 %	2014 %	2015 %
Românești/ National films	91 006 1,34	288 363 3,67	242 030 2,86	199 549 2,11	203 822 1,90
Europene/ European films	302 441 4,45	688 440 8,77	314 018 3,71	814 518 8,61	1 184 312 11,04
Americane/ American films	6 388 858 94,05	6 871 058 87,53	7 776 969 91,94	8 393 689 88,77	8 947 476 83,46
Alte țări/ Others	11 096 0,16	2 401 0,03	125 791 1,49	47 692 0,50	384 708 3,58
<b>Total</b>	<b>6 793 401</b>	<b>7 850 262</b>	<b>8 458 808</b>	<b>9 455 448</b>	<b>10 720 318</b>





**3.2 TOTAL NUMĂR SPECTATORI / ADMISSIONS ACCORDING  
TO THE ORIGIN OF ALL RELEASED FEATURE FILMS  
2011 - 2015**

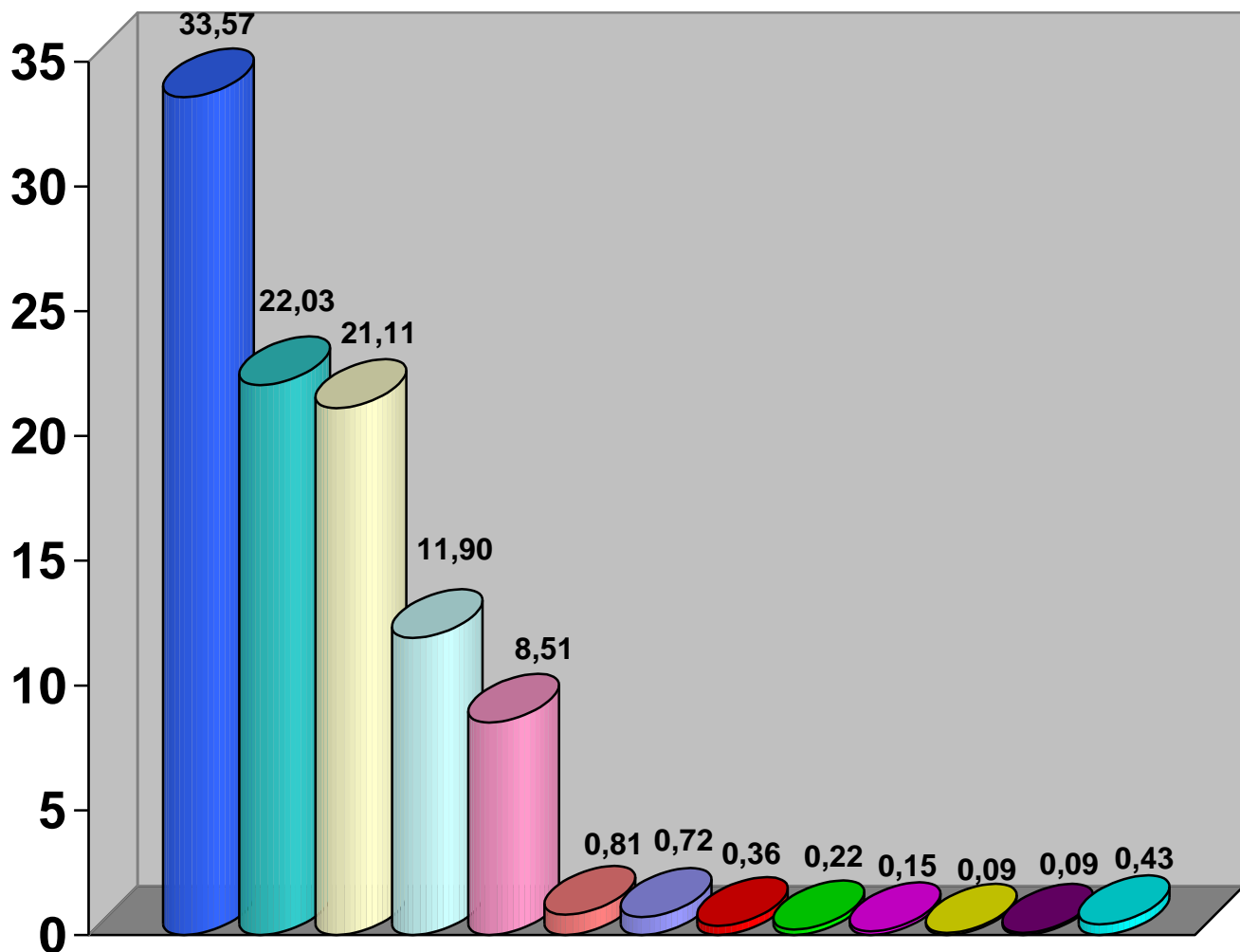
Țara de origine/ Film origin	2011 %	2012 %	2013 %	2014 %	2015 %
Românești/ National films	99 860 1,38	297 487 3,56	256 594 2,84	221 625 2,18	216 316 1,94
Europene/ European films	389 573 5,38	747 095 8,95	418 018 4,62	876 961 8,62	1 275 601 11,42
Americane/ American films	6 716 597 92,83	7 290 028 87,32	8 238 764 91,05	8 996 933 88,45	9 259 088 82,92
Alte țări/ Others	29 352 0,41	13 928 0,17	134 881 1,49	76 125 0,75	415 856 3,72
<b>Total</b>	<b>7 235 382</b>	<b>8 348 538</b>	<b>9 048 257</b>	<b>10 171 644</b>	<b>11 166 861</b>



**4. NUMĂRUL SPECTATORILOR REALIZAT CU FILMELE ÎN PREMIERĂ, PE DISTRIBUITORI / ADMISSIONS ACCORDING TO DISTRIBUTION COMPANIES OF THE FIRST TIME RELEASE  
FEATURE FILMS 2011– 2015**

<i>Distribuitori/ Distribution companies</i>	2011 %	2012 %	2013 %	2014 %	2015 %
Ro – Image 2000	1.875.612 27,61	1.872.467 23,85	1.671.038 19,76	1.699.574 17,97	3.599.093 33,57
Forum Film Romania	845.604 12,45	1.497.643 19081	1.496.546 17,69	1.696.828 17,95	2.361.856 22,03
Freeman Entertainment				792.309 8,38	2.262.850 21,11
Intercom Film	898.596 13,23	1.015.571 12,94	1.056.453 12,49	1.107.349 11,71	1.275.473 11,90
Odeon Cineplex	676.056 9,95	919.425 11,71	1.027.971 12,15	1.517.757 16,05	912.111 8,51
Transilvania Film	40.840 0,60	98.461 1,25	15.640 0,18	28.243 0,30	86.340 0,81
Parada Film			115.210 1,36		77.692 0,72
Independența Film	49.270 0,73	42.885 0,55	46.475 0,55	80.543 0,85	39.055 0,36
Zazu Film				87.288 0,92	23.753 0,22
Clorofilm	17.804 0,26	5.438 0,07	5.420 0,06	4.351 0,05	16.506 0,15
Cine Europa					9.975 0,09
Asociatia Culturala Macondo			15.250 0,18		9.429 0,09
MediaPro Distribution	2.193.669 32,29	2.099.323 26,74	2.679.073 31,67	2.321.936 24,56	
Hollywood Multiplex	110.683 1,63	193.134 2,46	265.068 3,13	29.663 0,31	
Alți distribuitori/ Others	85.627 1,26	105.915 1,35	64.664 0,76	89.607 0,95	46.185 0,43
<b>Total</b>	<b>6.793.401</b>	<b>7.850.262</b>	<b>8.458.808</b>	<b>9.455.448</b>	<b>10.720.318</b>

**COTA DE PIATA A PRINCIPALILOR DISTRIBUTORI CU FILME IN PREMIERĂ, ÎN FUNCȚIE  
DE SPECTATORI /  
MARKET SHARE ACCORDING TO DISTRIBUTION COMPANIES OF FIRST-TIME RELEASE  
FILMS  
ANUL/YEAR 2015**

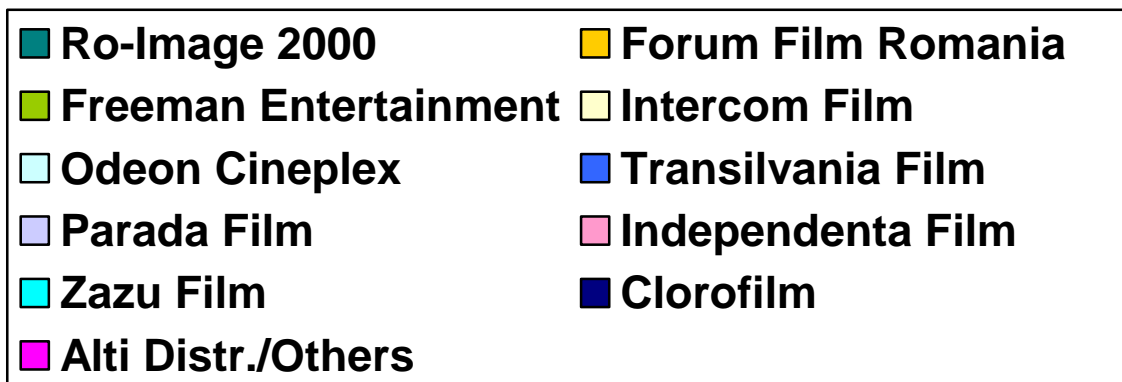
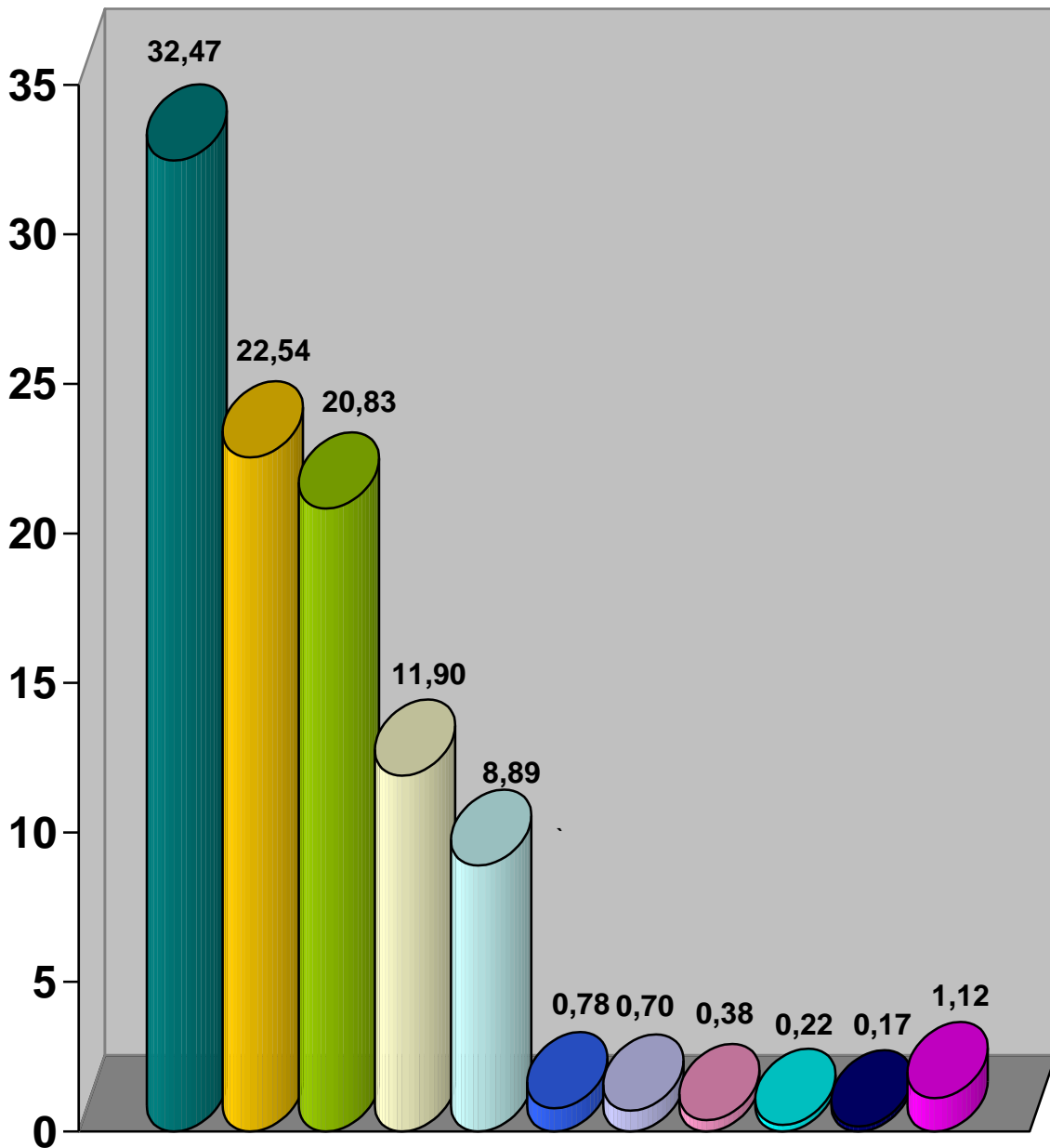


<span style="color: blue;">■</span> Ro-Image 2000	<span style="color: cyan;">■</span> Forum Film Romania
<span style="color: yellow;">■</span> Freeman Entertainment	<span style="color: lightblue;">■</span> Intercom Film
<span style="color: pink;">■</span> Odeon Cineplex	<span style="color: lightcoral;">■</span> Transilvania Film
<span style="color: purple;">■</span> Parada Film	<span style="color: red;">■</span> Independenta Film
<span style="color: green;">■</span> Zazu Film	<span style="color: magenta;">■</span> Clorofilm
<span style="color: yellow;">■</span> CineEuropa	<span style="color: purple;">■</span> Asociatia Culturala Macondo
<span style="color: cyan;">■</span> Alti distribuitori/Others	

**5. NUMĂRUL SPECTATORILOR REALIZAT CU TOTALUL FILMELOR DIFUZATE, PE DISTRIBUITORI / ADMISSIONS ACCORDING TO DISTRIBUTION COMPANIES  
2011– 2015**

Distribuitori/ Distribution companies	2011 %	2012	2013 %	2014 %	2015 %
Ro –Image 2000	1.977.124 27,33	2.015.357 24,14	1.855.701 20,51	1.820.820 17,90	3.625.599 32,47
Forum Film Romania	904 193 12,50	1.499.202 17,96	1.647.234 18,20	1.997.512 19,64	2.516.994 22,54
Freeman Entertainment				792.309 7,79	2.326.223 20,83
Intercom Film	1. 008 .949 13,94	1.103.270 13,22	1.070.654 11,83	1.119.925 11,01	1.328.450 11,90
Odeon Cineplex	733.725 10,14	954.539 11,43	1.152.730 12,74	1.562.658 15,36	993.185 8,89
Transilvania Film	43.188 0,60	102.451 1,23	19.827 0,22	30.567 0,30	87.476 0,78
Parada Film			115.462 1,28		78.002 0,70
Independenta Film	52.719 0,73	48.268 0,58	51.172 0,57	86.458 0,85	42.014 0,38
Zazu Film				87.288 0,86	24.118 0,22
Clorofilm	34. 805 0,48	28.518 0,34	19.626 0,22	22.575 0,22	19.496 0,17
Tiff		7.223 0,09	6.556 0,07	9.317 0,09	14.625 0,13
Asociatia Culturala Macondo			16.399 0,18		11.388 0,10
VoodooFilms	17. 913 0,25	52.273 0,63	6.584 0,07	5.449 0,05	4.178 0,04
Mediapro Distribution	2.214.248 30,60	2.251.271 26,97	2.719.084 30,05	2.468.626 24,27	4.027 0,04
Parlux Entertainment			16.847 0,19	7.820 0,08	3.813 0,03
BML Movie Entertainment				12.437 0,12	2.168 0,02
Hollywood Multiplex	110 683 1,53	193.134 2,31	265.068 2,93	29.751 0,29	
Alti distribuitori/ Others	137.895 1,91	93.032 1,11	83.313 0,94	118.132 1,16	85.105 0,76
<b>TOTAL</b>	<b>7.235.382</b>	<b>8.348.538</b>	<b>9.048.257</b>	<b>10.171.644</b>	<b>11.166.861</b>

**COTA DE PIAȚĂ A PRINCIPALILOR DISTRIBUITORI/  
 MARKET SHARE OF MAJOR DISTRIBUTION COMPANIES  
 ANUL / YEAR 2015**



**6. PRIMELE 20 DE CINEMATOGRAFE CU UN ECRAN, DUPĂ NUMĂRUL SPECTATORILOR REALIZAT / THE TOP 20 CINEMAS BY ADMISSIONS ANUL / YEAR 2015**

<i>Nr. Crt.</i>	<i>Cinematograf/ Cinema</i>	<i>Localitatea/ Town</i>	<i>Număr Locuri/ Number of seats</i>	<i>Număr Spectatori/ Admissions</i>
1	FLORIN PIERSIC	CLUJ NAPOCA	720	83 416
2	ARTA	SIBIU	230	69 469
3	DACIA	RESIȚA	402	66 969
4	PATRIA	CRAIOVA	708	57 913
5	VICTORIA	CLUJ NAPOCA	283	57 385
6	CINEMA PRO	BUCUREȘTI	593	46 904
7	ARTA	TARGU MURES	313	43 013
8	ELVIRA POPESCU	BUCUREȘTI	239	41 322
9	DACIA	BUZAU	300	36 841
10	METACOM-SATU MARE	SATU MARE	70	35 245
11	AUREL ELEFTERESCU	CALARASI	159	34 585
12	CAPITOL	ONESTI	330	34 460
13	STUDIO	BUCUREȘTI	372	32 701
14	LUCEAFARUL	VULCAN	234	29 090
15	BELA LUGOSI	LUGOJ	138	25 019
16	SERGIU NICOLAESCU	TARGU JIU	300	24 459
17	GEO SAIZESCU	RAMNICU VALCEA	174	22 345
18	COTROCENI	BUCUREȘTI	94	22 037
19	ION MANOLE	GALAȚI	500	11 400
20	MUZEUL TARANULUI ROMAN	BUCUREȘTI	337	9 099

**7. CINEMATOGRAFE MULTIECRAN SI MULTIPLEXURI IN FUNCTIUNE/  
MULTISCREENS AND MULTIPLEXES 2015**

<i>Cinematograf/ Cinema</i>	<i>Localitate/ Town</i>	<i>Ecrane/ Screens</i>	<i>Locuri/ Seats</i>	<i>Spectatori/ Admissions</i>
CITYPLEX TULCEA	Tulcea	2	212	26 136
CITYPLEX BARLAD	Barlad	2	237	15 274
COLOURS CINEMA	Craiova	2	177	105 505
CINEMA SLATINA	Slatina	2	86	41 910
COLOURS CINEMA	Alba Iulia	3	309	39 898
HAPPY CINEMA FOCȘANI	Focsani	2	222	90 368
LINE CINEMA RM.VÂLCEA	Rm.Valcea	2	193	69 301
CITYPLEX BRASOV	Brasov	3	243	90 752
CITYPLEX TOMIS CONSTANȚA	Constanta	4	679	68 902
CINEMA CITY IASI	Iasi	5	865	422 700
CINE GRAND UVERTURA MALL	Botosani	5	446	145 157
CINEMA CITY PLOIESTI AFI	Ploiesti	6	1 270	82 781
CINEMA CITY TARGU JIU	Targu Jiu	6	1 037	104 213
CINEMA CITY DEVA	Deva	6	1 087	81 114
CINEMA CITY DROBETA TURNU SEVERIN	Drobeta Turnu Severin	6	939	41 106

<b>CINEMA CITY PITESTI</b>	<b>Pitesti</b>	<b>6</b>	<b>1 264</b>	<b>186 587</b>
<b>CINEMA CITY BAI A MARE</b>	<b>Baia Mare</b>	<b>6</b>	<b>1 151</b>	<b>193 497</b>
<b>CORTINA DIGIPLEX</b>	<b>Oradea</b>	<b>6</b>	<b>961</b>	<b>126 795</b>
<b>CINEMA PALACE ORADEA</b>	<b>Oradea</b>	<b>6</b>	<b>685</b>	<b>233 076</b>
<b>CINEMA CITY TIMISOARA</b>	<b>Timisoara</b>	<b>7</b>	<b>951</b>	<b>544 167</b>
<b>CINEMA TRIVALE PITEȘTI</b>	<b>Pitesti</b>	<b>7</b>	<b>767</b>	<b>99 187</b>
<b>CINE GRAND IRIS TITAN</b>	<b>Bucuresti</b>	<b>7</b>	<b>950</b>	<b>159 817</b>
<b>CINEMA CITY CLUJ NAPOCA POLUS</b>	<b>Cluj Napoca</b>	<b>8</b>	<b>1 792</b>	<b>309 250</b>
<b>CINEMA ONE BRAȘOV</b>	<b>Brasov</b>	<b>8</b>	<b>1470</b>	<b>323 985</b>
<b>CINEMA CITY BACAU</b>	<b>Bacau</b>	<b>8</b>	<b>1 324</b>	<b>295 089</b>
<b>CINEMA CITY ARAD GTC</b>	<b>Arad</b>	<b>8</b>	<b>1 673</b>	<b>43 650</b>
<b>CINEMA CITY TARGU MURES</b>	<b>Targu Mures</b>	<b>8</b>	<b>1 465</b>	<b>215 437</b>
<b>CINEMA CITY CONSTANTA</b>	<b>Constanta</b>	<b>8</b>	<b>1 774</b>	<b>492 197</b>
<b>CINEMA CITY SUCEVA</b>	<b>Suceava</b>	<b>8</b>	<b>1 346</b>	<b>81 310</b>
<b>CINEMA CITY CONSTANTA PARK</b>	<b>Constanta</b>	<b>10</b>	<b>1 692</b>	<b>167 635</b>
<b>HOLLYWOOD MULTIPLEX</b>	<b>Bucuresti</b>	<b>10</b>	<b>2 125</b>	<b>465 535</b>
<b>CINEMA CITY BRAILA</b>	<b>Braila</b>	<b>10</b>	<b>1 724</b>	<b>356 706</b>
<b>CINEMA CITY ARAD</b>	<b>Arad</b>	<b>10</b>	<b>1 628</b>	<b>226 520</b>
<b>CINEMA CITY CLUJ NAPOCA</b>	<b>Cluj</b>	<b>10</b>	<b>1 670</b>	<b>400 660</b>
<b>MOVIEPLEX CINEMA</b>	<b>Bucuresti</b>	<b>11</b>	<b>2 564</b>	<b>690 089</b>
<b>CINEMA CITY PLOIESTI</b>	<b>Ploiesti</b>	<b>12</b>	<b>2 089</b>	<b>360 932</b>
<b>GRAND CINEMA DIGIPLEX</b>	<b>Bucuresti</b>	<b>13</b>	<b>2 654</b>	<b>946 372</b>
<b>CINEMA CITY MEGA MALL</b>	<b>Bucuresti</b>	<b>14</b>	<b>2 366</b>	<b>376 846</b>
<b>CINEMA CITY SUN PLAZA</b>	<b>Bucuresti</b>	<b>15</b>	<b>2 835</b>	<b>509 864</b>
<b>CINEMA CITY COTROCENI</b>	<b>Bucuresti</b>	<b>21</b>	<b>4 319</b>	<b>1 028 614</b>



**CINEMA CITY COTROCENI**

<i>Sali cinematograf/ Screens</i>	<i>Numar locuri/ Number of seats</i>	<i>Numar spectatori/ Admissions</i>
1	31	17 828
2	27	12 211
3	30	14 309
4	166	35 678
5	199	39 730
6	283	67 801
7	217	44 674
8	329	83 663
9	297	83 548
10	365	104 647
11	283	63 280
12	252	48 623
13	256	51 097
14	92	24 167
15	171	34 061
16	175	34 761
17	197	29 237
18	188	34 741
19	178	28 008
20	185	25 787
21-IMAX	398	151 075
<b>Total</b>	<b>4.319</b>	<b>1 028 614</b>

**CINEMA CITY SUN PLAZA**

<i>Sali cinematograf/ Screens</i>	<i>Numar locuri/ Number of seats</i>	<i>Numar spectatori/ Admissions</i>
1	157	24 398
2	262	50 748
3	229	36 912
4	312	61 418
5	131	22 910
6	105	23 741
7	88	15 562
8	81	15 697
9	105	19 621
10	138	22453
11	138	26 342
12	228	41 618
13	242	33 952
14	216	34 843
15	403	79 649
<b>Total</b>	<b>2 835</b>	<b>509 864</b>

**CINEMA CITY MEGA MALL**

<i>Sali cinematograf/ Screens</i>	<i>Numar locuri/ Number of seats</i>	<i>Numar spectatori/ Admissions</i>
1	97	11 211
2	195	25 767
3	125	20 301
4	115	15 025
5	124	17 778
6	128	94 425
7	193	28 360
8	93	11 864
9	101	13 694
10	175	21 672
11	356	40 798
12	328	35 886
13	168	17 295
14	168	22 770
<b>Total</b>	<b>2 366</b>	<b>376 846</b>

**GRAND CINEMA DIGIPLEX BUCUREȘTI**

<i>Sali cinematograf/ Screens</i>	<i>Numar locuri/ Number of seats</i>	<i>Numar spectatori/ Admissions</i>
1	363	117 700
2	303	111 529
3	105	41 022
4	105	57 619
5	177	74 882
6	480	127 032
7	480	135 633
8	43	15 393
9	43	15 068
10	155	71 304
11	207	86 809
12	97	47 817
13	97	44 564
<b>Total</b>	<b>2 654</b>	<b>946 372</b>

## CINEMA CITY PLOIEȘTI

<i>Sali cinematograf/ Screens</i>	<i>Numar locuri/ Number of seats</i>	<i>Numar spectatori/ Admissions</i>
1	259	39 175
2	129	17 417
3	153	25 141
4	202	31 286
5	101	20 686
6	93	14 091
7	186	25 899
8	283	56 617
9	310	75 897
10	159	24 373
11	129	18 556
12	85	11 794
<b>Total</b>	<b>2 089</b>	<b>360 932</b>

## MOVIEPLEX BUCUREȘTI

<i>Sali cinematograf/ Screens</i>	<i>Numar locuri/ Number of seats</i>	<i>Numar spectatori/ Admissions</i>
1	188	48 295
2	178	50 536
3	188	51 461
4	123	37 573
5	88	30 469
6	347	91 551
7	199	55 175
8	472	121 851
9	213	52 213
10	245	61 239
11	323	89 726
<b>Total</b>	<b>2 564</b>	<b>690 089</b>

## HOLLYWOOD MULTIPLEX BUCUREȘTI MALL

<i>Sali cinematograf/ Screens</i>	<i>Numar locuri/ Number of seats</i>	<i>Numar spectatori/ Admissions</i>
1	270	53 961
2	131	27 365
3	397	75 121
4	131	22 631
5	270	58 102
6	155	42 821
7	155	39 638
8	306	69 118
9	155	41 362
10	155	35 416
<b>Total</b>	<b>2 125</b>	<b>465 535</b>

## CINEMA CITY CONSTANȚA PARK

<i>Sali cinematograf/ Screens</i>	<i>Numar locuri/ Number of seats</i>	<i>Numar spectatori/ Admissions</i>
1	118	8 473
2	144	59 841
3	343	18 783
4	142	10 605
5	152	11 144
6	131	11 881
7	135	10 701
8	99	7 239
9	180	12 193
10	248	16 775
<b>Total</b>	<b>1692</b>	<b>167 635</b>

## CINEMA CITY ARAD

<i>Sali cinematograf/ Screens</i>	<i>Numar locuri/ Number of seats</i>	<i>Numar spectatori/ Admissions</i>
1	262	40 096
2	162	21 234
3	108	12 087
4	78	9 551
5	281	54 208
6	125	17 671
7	125	13 821
8	124	16 940
9	115	13 319
10	248	27 593
<b>Total</b>	<b>1 628</b>	<b>226 520</b>

**CINEMA CITY CLUJ-NAPOCA**

<i>Sali cinematograf/ Screens</i>	<i>Numar locuri/ Number of seats</i>	<i>Numar spectatori/ Admissions</i>
1	174	29 433
2	174	32 879
3	174	27 388
4	174	31 012
5	66	20 591
6	207	43 511
7	217	68 219
8	218	84 759
9	200	41 635
10	66	21 233
<b>Total</b>	<b>1 670</b>	<b>400 660</b>

**CINEMA CITY BRĂILA**

<i>Sali cinematograf/ Screens</i>	<i>Numar locuri/ Number of seats</i>	<i>Numar spectatori/ Admissions</i>
1	256	44 021
2	256	44 103
3	344	88 846
4	278	51 379
5	115	27 221
6	106	21 868
7	77	15 564
8	106	24 462
9	93	22 536
10	93	16 706
<b>Total</b>	<b>1 724</b>	<b>356 706</b>

**CINEMA CITY BACAU**

<i>Sali cinematograf/ Screens</i>	<i>Numar locuri/ Number of seats</i>	<i>Numar spectatori/ Admissions</i>
1	192	31 559
2	105	25 686
3	105	24 734
4	209	54 800
5	308	76 502
6	165	32 367
7	105	20 413
8	135	29 028
<b>Total</b>	<b>1 324</b>	<b>295 089</b>

**CINEMA CITY TÂRGU MUREȘ**

<i>Sali cinematograf/ Screens</i>	<i>Numar locuri/ Number of seats</i>	<i>Numar spectatori/ Admissions</i>
1	326	53 068
2	186	32 187
3	141	16 292
4	109	13 516
5	126	20 628
6	152	23 909
7	139	18 554
8	286	37 283
<b>Total</b>	<b>1465</b>	<b>215 437</b>

**CINEMA CITY ARAD GTC**

<i>Sali cinematograf/ Screens</i>	<i>Numar locuri/ Number of seats</i>	<i>Numar spectatori/ Admissions</i>
1	101	3 513
2	193	3 482
3	248	7 796
4	198	2 665
5	165	2 590
6	228	4 239
7	228	5 698
8	312	13 667
<b>Total</b>	<b>1 673</b>	<b>43 650</b>

**CINEMA CITY CONSTANȚA**

<i>Sali cinematograf/ Screens</i>	<i>Numar locuri/ Number of seats</i>	<i>Numar spectatori/ Admissions</i>
1	225	61 854
2	159	44 780
3	170	34 288
4	191	52 428
5	335	95 089
6	353	120 784
7	159	43 115
8	182	39 859
<b>Total</b>	<b>1 774</b>	<b>492 197</b>

**CINEMA CITY CLUJ – NAPOCA POLUS**

<i>Sali cinematograf/ Screens</i>	<i>Numar locuri/ Number of seats</i>	<i>Numar spectatori/ Admissions</i>
1	180	24 260
2	244	34 660
3	269	51 972
4	269	60 829
5	156	23 374
6	180	25 763
7	276	58 987
8	218	29 405
<b>Total</b>	<b>1 792</b>	<b>309 250</b>

**CINEMA ONE BRAȘOV**

<i>Sali cinematograf/ Screens</i>	<i>Numar locuri/ Number of seats</i>	<i>Numar spectatori/ Admissions</i>
1	333	55 642
2	200	38 999
3	92	24 841
4	167	42 844
5	167	49 637
6	228	57 840
7	157	31 659
8	126	22 523
<b>Total</b>	<b>1470</b>	<b>323 985</b>

**CINEMA CITY TIMIȘOARA**

<i>Sali cinematograf/ Screens</i>	<i>Numar locuri/ Number of seats</i>	<i>Numar spectatori/ Admissions</i>
1	215	112 962
2	112	67 691
3	112	66 116
4	112	66 260
5	317	165 713
6	41	30 942
7	42	34 483
<b>Total</b>	<b>951</b>	<b>544 167</b>

## CINEMA CITY SUCEAVA

<i>Sali cinematograf/ Screens</i>	<i>Numar locuri/ Number of seats</i>	<i>Numar spectatori/ Admissions</i>
1	288	15 051
2	225	13 170
3	132	9 237
4	106	9 352
5	79	6 219
6	114	8 572
7	191	10 218
8	211	9 491
<b>Total</b>	<b>1 346</b>	<b>81 310</b>

## CINE GRAND IRIS TITAN BUCUREȘTI

<i>Sali cinematograf/ Screens</i>	<i>Numar locuri/ Number of seats</i>	<i>Numar spectatori/ Admissions</i>
1	178	36 428
2	186	33 020
3	186	34 071
4	78	10 370
5	78	10 547
6	122	17 537
7	122	17 844
<b>Total</b>	<b>950</b>	<b>159 817</b>

## CINEMA TRIVALE PITEȘTI

<i>Sali cinematograf/ Screens</i>	<i>Numar locuri/ Number of seats</i>	<i>Numar spectatori/ Admissions</i>
1	144	18 069
2	176	22 554
3	84	16 008
4	95	10 835
5	140	16 102
6	40	6 199
7	88	9 420
<b>Total</b>	<b>767</b>	<b>99 187</b>



**CINEMA CITY PITEȘTI**

<i>Sali cinematograf/ Screens</i>	<i>Numar locuri/ Number of seats</i>	<i>Numar spectatori/ Admissions</i>
1	247	40 145
2	191	24 631
3	197	23 855
4	158	18 950
5	131	19 342
6	340	59 664
<b>Total</b>	<b>1 264</b>	<b>186 587</b>

**CINEMA CITY BAIA MARE**

<i>Sali cinematograf/ Screens</i>	<i>Numar locuri/ Number of seats</i>	<i>Numar spectatori/ Admissions</i>
1	259	36 824
2	158	26 771
3	210	30 562
4	139	21 068
5	77	19 434
6	308	58 838
<b>Total</b>	<b>1 151</b>	<b>193 497</b>

**CINEMA CITY PLOIEȘTI AFI**

<i>Sali cinematograf/ Screens</i>	<i>Numar locuri/ Number of seats</i>	<i>Numar spectatori/ Admissions</i>
1	109	8 807
2	147	9 758
3	216	13 075
4	190	9 935
5	297	20 137
6	311	21 069
<b>Total</b>	<b>1 270</b>	<b>82 781</b>

**CINEMA CITY DEVA**

<i>Sali cinematograf/ Screens</i>	<i>Numar locuri/ Number of seats</i>	<i>Numar spectatori/ Admissions</i>
1	313	21 361
2	220	18 885
3	165	12 037
4	165	9 361
5	139	11 235
6	85	8 235
<b>Total</b>	<b>1 087</b>	<b>81 114</b>

**CINEMA CITY DROBETA TURNU SEVERIN**

<i>Sali cinematograf/ Screens</i>	<i>Numar locuri/ Number of seats</i>	<i>Numar spectatori/ Admissions</i>
1	129	5 121
2	181	8 149
3	93	4 436
4	93	5 271
5	180	6 792
6	263	11 337
<b>Total</b>	<b>939</b>	<b>41 106</b>

**CINEMA PALACE ORADEA**

<i>Sali cinematograf/ Screens</i>	<i>Numar locuri/ Number of seats</i>	<i>Numar spectatori/ Admissions</i>
1	132	42 211
2	188	64 153
3	168	50 412
4	69	25 480
5	69	24 354
6	59	26 466
<b>Total</b>	<b>685</b>	<b>233 076</b>

**CINEMA CITY TARGU JIU**

<i>Sali cinematograf/ Screens</i>	<i>Numar locuri/ Number of seats</i>	<i>Numar spectatori/ Admissions</i>
1	317	35 520
2	122	12 843
3	100	9 859
4	93	9 401
5	176	15 023
6	229	21 567
<b>Total</b>	<b>1037</b>	<b>104 213</b>

### CINE GRAND BOTOȘANI

<i>Sali cinematograf/ Screens</i>	<i>Numar locuri/ Number of seats</i>	<i>Numar spectatori/ Admissions</i>
1	93	33 361
2	93	34 504
3	82	22 874
4	103	37 243
5	75	17 175
<b>Total</b>	<b>446</b>	<b>145 157</b>

### CINEMA CITY IASI

<i>Sali cinematograf/ Screens</i>	<i>Numar locuri/ Number of seats</i>	<i>Numar spectatori/ Admissions</i>
1	245	126 001
2	245	110 533
3	187	75 321
4	94	54 630
5	94	56 215
<b>Total</b>	<b>865</b>	<b>422 700</b>

### CITYPLEX TOMIS CONSTANȚA

<i>Sali cinematograf/ Screens</i>	<i>Numar locuri/ Number of seats</i>	<i>Numar spectatori/ Admissions</i>
1	135	16 911
2	203	26 296
3	207	22 029
4	134	3 792
<b>TOTAL</b>	<b>679</b>	<b>69 028</b>

### CITYPLEX BRAȘOV

<i>Sali cinematograf/ Screens</i>	<i>Numar locuri/ Number of seats</i>	<i>Numar spectatori/ Admissions</i>
1	81	31 371
2	81	34 278
3	81	25 103
<b>Total</b>	<b>243</b>	<b>90 752</b>

**CITYPLEX TULCEA**

<i>Sali cinematograf/ Screens</i>	<i>Numar locuri/ Number of seats</i>	<i>Numar spectatori/ Admissions</i>
<b>1</b>	<b>131</b>	<b>14 931</b>
<b>2</b>	<b>81</b>	<b>11 205</b>
<b>Total</b>	<b>212</b>	<b>26 136</b>

**CITYPLEX BARLAD**

<i>Sali cinematograf/ Screens</i>	<i>Numar locuri/ Number of seats</i>	<i>Numar spectatori/ Admissions</i>
<b>1</b>	<b>165</b>	<b>14 597</b>
<b>2</b>	<b>72</b>	<b>677</b>
<b>Total</b>	<b>237</b>	<b>15 274</b>

**3D COLOURS CRAIOVA**

<i>Sali cinematograf/ Screens</i>	<i>Numar locuri/ Number of seats</i>	<i>Numar spectatori/ Admissions</i>
<b>1</b>	<b>118</b>	<b>71 473</b>
<b>2</b>	<b>69</b>	<b>34 032</b>
<b>Total</b>	<b>187</b>	<b>105 505</b>

**COLOURS CINEMA ALBA IULIA**

<i>Sali cinematograf/ Screens</i>	<i>Numar locuri/ Number of seats</i>	<i>Numar spectatori/ Admissions</i>
<b>1</b>	<b>111</b>	<b>21 727</b>
<b>2</b>	<b>111</b>	<b>14 819</b>
<b>3</b>	<b>87</b>	<b>3 352</b>
<b>Total</b>	<b>309</b>	<b>39 898</b>

**CINEMA HAPPY FOCȘANI**

<i>Sali cinematograf/ Screens</i>	<i>Numar locuri/ Number of seats</i>	<i>Numar spectatori/ Admissions</i>
<b>1</b>	<b>111</b>	<b>56 001</b>
<b>2</b>	<b>111</b>	<b>34 367</b>
<b>Total</b>	<b>222</b>	<b>90 368</b>

**EUGEN IONESCU SLATINA**

<i>Sali cinematograf/ Screens</i>	<i>Numar locuri/ Number of seats</i>	<i>Numar spectatori/ Admissions</i>
<b>1</b>	<b>43</b>	<b>21 263</b>
<b>2</b>	<b>43</b>	<b>20 647</b>
<b>Total</b>	<b>86</b>	<b>41 910</b>

**LINE CINEMA RÂMNICU VÂLCEA**

<i>Sali cinematograf/ Screens</i>	<i>Numar locuri/ Number of seats</i>	<i>Numar spectatori/ Admissions</i>
<b>1</b>	<b>97</b>	<b>38 101</b>
<b>2</b>	<b>96</b>	<b>31 200</b>
<b>Total</b>	<b>193</b>	<b>69 301</b>

## 8. CINEMATOGRAFE DE ARTA 2015

<i>Cinematograf/cinema localitate/town nr.locuri/number of seats</i>	<i>Spectacole/ Screenings 2015</i>	<i>Spectatori/ Admissions 2015</i>
<b>VICTORIA – Cluj_Napoca ( 283 locuri/seats)</b>	<b>1 560</b>	<b>57 385</b>
<b>ELVIRA POPESCU_Bucuresti ( 239 locuri/seats )</b>	<b>747</b>	<b>41 322</b>
<b>STUDIO – București (372 locuri/seats)</b>	<b>1 215</b>	<b>32 701</b>
<b>CITYPLEX BRASOV – sala 3 (81 locuri/seats)</b>	<b>1 580</b>	<b>25 103</b>
<b>NOUL CINEMATOGRAF AL REGIZORULUI ROMAN Bucuresti (337 locuri/seats)</b>	<b>443</b>	<b>9 099</b>
<b>EUROPA_București (273 locuri/seats)</b>	<b>628</b>	<b>4 092</b>
<b>CITYPLEX CONSTANTA –sala 4 (134 locuri/seats)</b>	<b>1 620</b>	<b>3 792</b>
<b>MODERN – Craiova (175 locuri/seats)</b>	<b>404</b>	<b>2 080</b>
<b>CITYPLEX VICTORIA Barlad- sala2 (72 locuri/seats)</b>	<b>347</b>	<b>677</b>

**9. TOP 20 DE FILME DUPĂ NUMARUL DE SPECTATORI  
THE TOP 20 RELEASED FEATURE FILMS BY ADMISSIONS  
Anul / year 2015**

1. FURIOS SI IUTE 7	US/JP	/2015	627.016
FAST & FURIOUS 7/RO-IMAGE 2000			
2. STAR WARS: TREZIREA FORTEI	US	/2015	441.775
STAR WARS: EPISODE VII/FORUM FILM ROMANIA			
3. MINIONII	US	/2015	431.201
MINIONS/RO-IMAGE 2000			
4. SPECTRE	US/GB	/2015	328.802
SPECTRE/FORUM FILM ROMANIA			
5. CINCIZECI DE UMBRE ALE LUI GREY	US	/2015	305.995
FIFTY SHADES OF GREY/RO-IMAGE 2000			
6. JURASSIC WORLD	US/CN	/2015	229.305
JURASSIC WORLD/RO-IMAGE 2000			
7. RAZBUNATORII: SUB SEMNUL LUI ULTRON	US	/2015	229.122
THE AVENGERS 2 3D/FORUM FILM ROMANIA			
8. HOTEL TRANSYLVANIA 2	US	/2015	216.441
HOTEL TRANSYLVANIA 2/INTERCOMFILM DISTRIBUTION			
9. MARTIANUL	US	/2015	200.051
MARTIAN, THE/ODEON CINEPLEX			
10. TAKEN 3: TEROARE IN L.A.	FR	/2015	192.050
TAKEN 3/FREEMAN ENTERTAINMENT			
11. JOCURILE FOAMEI: REVOLTA - PARTEA II	US	/2015	188.759
MOCKING JAY 2/FORUM FILM ROMANIA			
12. MISIUNE: IMPOSIBILA. NATIUNEA SECRETA	US	/2015	180.301
MISSION: IMPOSSIBLE ROGUE NATION/RO-IMAGE 2000			
13. ULTIMUL VANATOR DE VRAJITOARE	US	/2015	176.526
THE LAST WITCH HUNTER/RO-IMAGE 2000			
14. INTORS PE DOS	US	/2015	170.764
INSIDE OUT 3D/FORUM FILM ROMANIA			
15. INSURGENT	US	/2015	161.905
INSURGENT/INTERCOMFILM DISTRIBUTION			
16. MAD MAX: DRUMUL FURIEI	AU	/2015	161.758
MAD MAX: FURY ROAD/FREEMAN ENTERTAINMENT			
17. FOCUS	US	/2015	161.413
FOCUS/FREEMAN ENTERTAINMENT			
18. EVEREST	US/IS	/2015	161.344
EVEREST/RO-IMAGE 2000			
19. ASCENSIUNEA LUI JUPITER	US	/2015	148.277
JUPITER ASCENDING/FREEMAN ENTERTAINMENT			
20. HOBBITUL: BATALIA CELOR CINCI OSTIRI	US	/2014	144.514
THE HOBBIT: THE BATTLE OF THE FIVE ARMIES/FORUM FILM ROMANIA			

**10. TOP 20 FILME EUROPENE DUPĂ NUMARUL DE SPECTATORI**  
**THE TOP 20 EUROPEAN FEATURE FILMS BY ADMISSIONS**  
**Anul / year 2015**

1. TAKEN 3: TEROARE IN L.A.	FR	/2015	192.050
TAKEN 3/FREEMAN ENTERTAINMENT			
2. AL SAPTELEA FIU	GB/CA/US/2015		142.538
SEVENTH SON/RO-IMAGE 2000			
3. GANGSTERI DE LEGENDA	GB	/2015	97.732
LEGEND/FREEMAN ENTERTAINMENT			
4. CRAIASA ZAPEZII	RU	/2015	83.245
THE SNOW QUEEN/FREEMAN ENTERTAINMENT			
5. JOCUL CODURILOR	GB/US	/2015	64.442
THE IMITATION GAME/FORUM FILM ROMANIA			
6. MUNE: GARDIANUL LUNII	FR	/2015	57.449
MUNE, LE GRADIENT DE LA LUNE/FREEMAN ENTERTAINMENT			
7. PENE GALBENE	FR/BE	/2015	55.945
GUS - PETIT OISEAU, GRAND VOYAGE/INTERCOMFILM DISTRIBUTION			
8. ASTERIX: DOMENIUL ZEILOR	FR/BE	/2015	45.144
ASTERIX: LE DOMAINE DES DIEUX/INTERCOMFILM DISTRIBUTION			
9. TINTA: PRESEDINTELE	DE/US	/2015	34.823
BIG GAME/RO-IMAGE 2000			
10. COCONUT, MICUL DRAGON	DE	/2015	28.983
COCONUT THE LITTLE DRAGON/RO-IMAGE 2000			
11. SAVVA: INIMA DE RAZBOINIC	RU	/2015	28.675
SAVVA. HEART OF THE WARRIOR/FREEMAN ENTERTAINMENT			
12. FEMEIA IN NEGRU 2: INGERUL MORTII	GB	/2015	28.581
WOMAN IN BLACK 2: ANGEL OF DEATH/FREEMAN ENTERTAINMENT			
13. TEORIA INTREGULUI	GB	/2015	28.438
THE THEORY OF EVERYTHING/RO-IMAGE 2000			
14. VACANTA CU "DE TOATE"	FR	/2015	24.404
ALL GONE SOUTH/RO-IMAGE 2000			
15. PADDINGTON	GB/FR	/2014	24.214
PADDINGTON/INTERCOMFILM DISTRIBUTION			
16. EXODUS: ZEI SI REGI	GB/US/ES/2014		24.191
EXODUS: GODS AND KINGS/ODEON CINEPLEX			
17. MACBETH	GB	/2015	22.478
MACBETH/ODEON CINEPLEX			
18. THE GUNMAN. PE VIATA SI PE MOARTE	FR/GB/US/2015		20.657
THE GUNMAN/RO-IMAGE 2000			
19. MINUSCULE: AVENTURA FURNICUTELOR RATACITE	FR/BE	/2015	20.441
MINUSCULE - THE VALLEY OF THE LOST ANTS/RO-IMAGE 2000			
20. VIATA BATE FILMUL	DE/US	/2015	19.439
SHE'S FUNNY THAT WAY/RO-IMAGE 2000			



**11. TOP 10 FILME ROMÂNESTI DUPĂ NUMARUL DE SPECTATORI**  
**THE TOP 10 OF FIRST-RELEASE NATIONAL FEATURE FILMS BY ADMISSIONS**  
**Anul / year 2015**

1. AFERIM!	74.749
RADU JUDE /PARADA FILM/2015	
2. DE CE EU?	51.715
TUDOR GIURGIU /TRANSILVANIA FILM/2015	
3. POVESTE DE DRAGOSTE	23.753
CRISTINA IACOB /ZAZU FILM/2015	
4. LUMEA E A MEA	18.585
NICOLAE CONSTANTIN TANASE /TRANSILVANIA FILM/2015	
5. COMOARA	6.964
CORNELIU PORUMBOIU /42 KM FILM/2015	
6. AUTOPORTRETUL UNEI FETE CUMINTI	5.339
ANA LUNGU /MANDRAGORA/2015	
7. BUCURESTI NONSTOP	5.025
DAN CHISU /DAKINO/2015	
8. CEL ALES	4.109
CRISTIAN COMEAGA /INTERCOMFILM DISTRIBUTION/2015	
9. UN ETAJ MAI JOS	3.246
RADU MUNTEAN /TRANSILVANIA FILM/2015	
10. LIVE	2.536
VLAD PAUNESCU /CASTEL FILM/2015	

**12. TOP 20 FILME ROMÂNESTI DUPA NUMARUL DE SPECTATORI 2011-2015**  
**THE TOP 20 OF FIRST-RELEASE NATIONAL FEATURE FILMS**  
**BY ADMISSIONS 2011-2015**

1. POZITIA COPILULUI		112.108
CALIN PETER NETZER	/PARADA FILM/2013	
2. #SELFIE		87.653
CRISTINA IACOB	/ZAZU FILM/2014	
3. AFERIM!		74.749
RADU JUDE	/PARADA FILM/2015	
4. DESPRE OAMENI SI MELCI		61.691
TUDOR GIURGIU	/TRANSILVANIA FILM/2012	
5. MINTE-MA FRUMOS		56.878
IURA LUNCASU	/MEDIAPRO DISTRIBUTION/2012	
6. DUPA DEALURI		52.113
CRISTIAN MUNGIU	/VOODOO FILMS/2012	
7. DE CE EU?		51.715
TUDOR GIURGIU	/TRANSILVANIA FILM/2015	
8. HO HO HO 2: O LOTERIE DE FAMILIE		50.430
JESUS DEL CERRO	/MEDIAPRO DISTRIBUTION/2012	
9. NASA		28.337
VIRGIL NICOLAESCU	/MEDIAPRO DISTRIBUTION/2011	
10. LOVE BUILDING		26.769
IULIA RUGINA	/MEDIAPRO DISTRIBUTION/2013	
11. FUNERALII FERICITE		25.031
HORATIU MALAIELE	/MEDIAPRO DISTRIBUTION/2013	
12. DOMNISOARA CHRISTINA		23.779
ALEXANDRU MAFTEI	/ABIS STUDIO/2013	
13. POVESTE DE DRAGOSTE		23.753
CRISTINA IACOB	/ZAZU FILM/2015	
14. CUSCRII		23.507
RADU POTCOAVA	/INTERCOMFILM DISTRIBUTION/2014	
15. AMERICA, VENIM!		22.408
RAZVAN SAVESCU	/TRANSILVANIA FILM/2014	
16. LUMEA E A MEA		18.585
NICOLAE CONSTANTIN TANASE	/TRANSILVANIA FILM/2015	
17. S-A FURAT MIREASA		18.133
JESUS DEL CERRO	/MEDIAPRO DISTRIBUTION/2012	
18. NU SUNT FAIMOS DAR SUNT AROMAN		15.984
TOMA ENACHE	/MEDIAPRO DISTRIBUTION/2013	
19. CLOSER TO THE MOON		15.634
NICOLAE CARANFIL	/MANDRAGORA MOVIES/2014	
20. SUNT O BABA COMUNISTA		14.703
STERE GULEA	/MEDIAPRO DISTRIBUTION/2013	